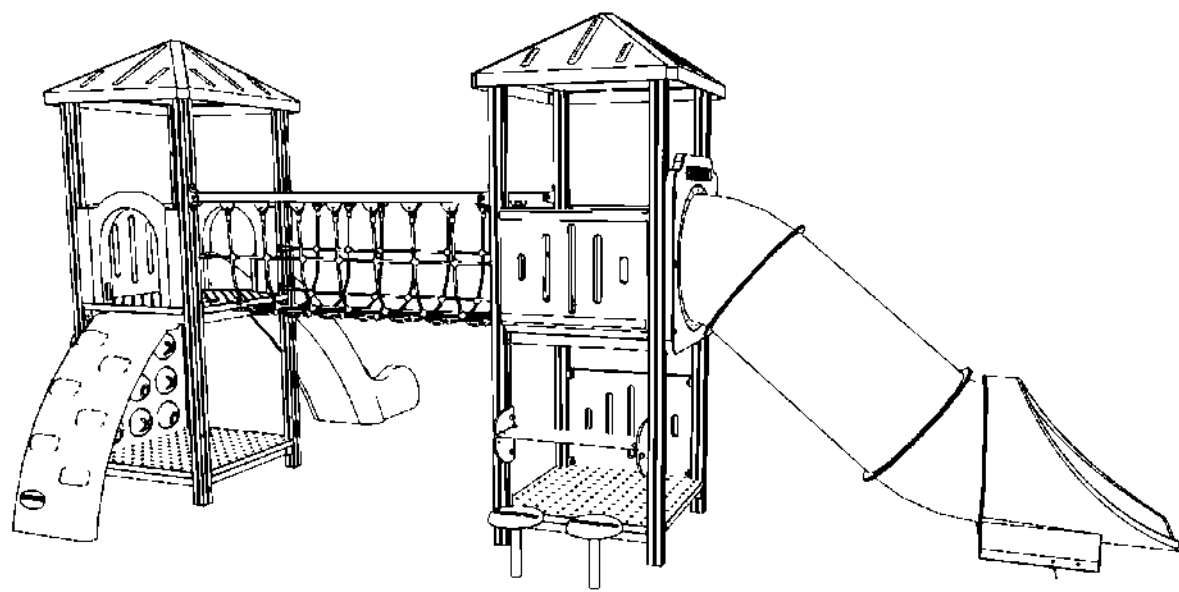
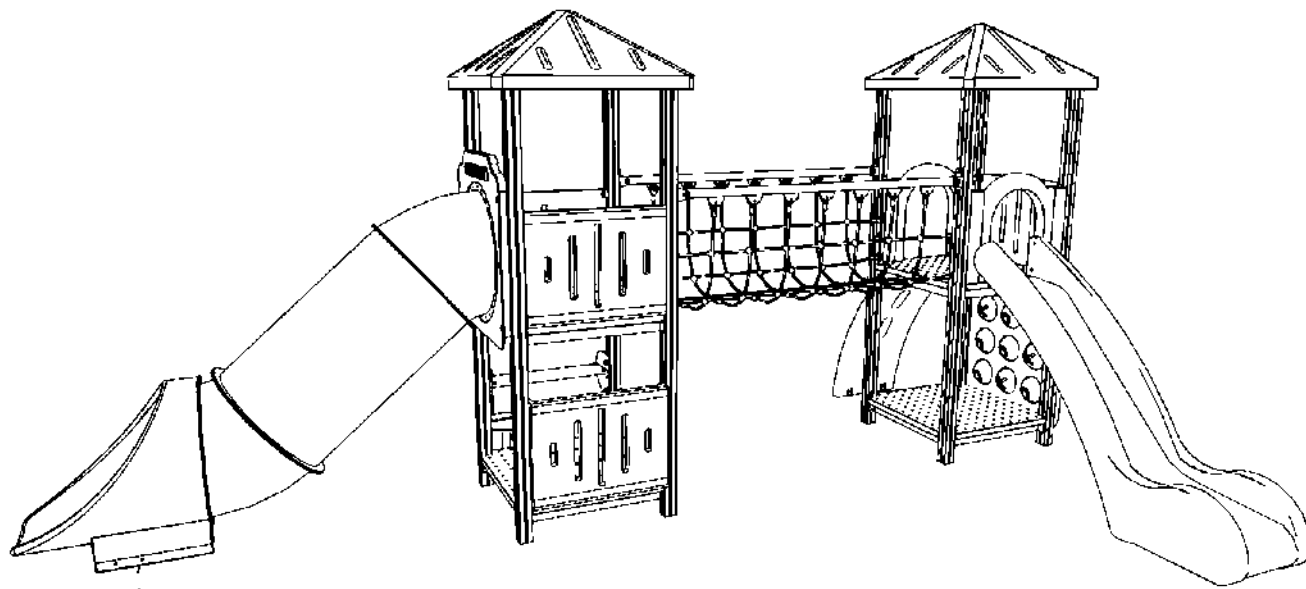


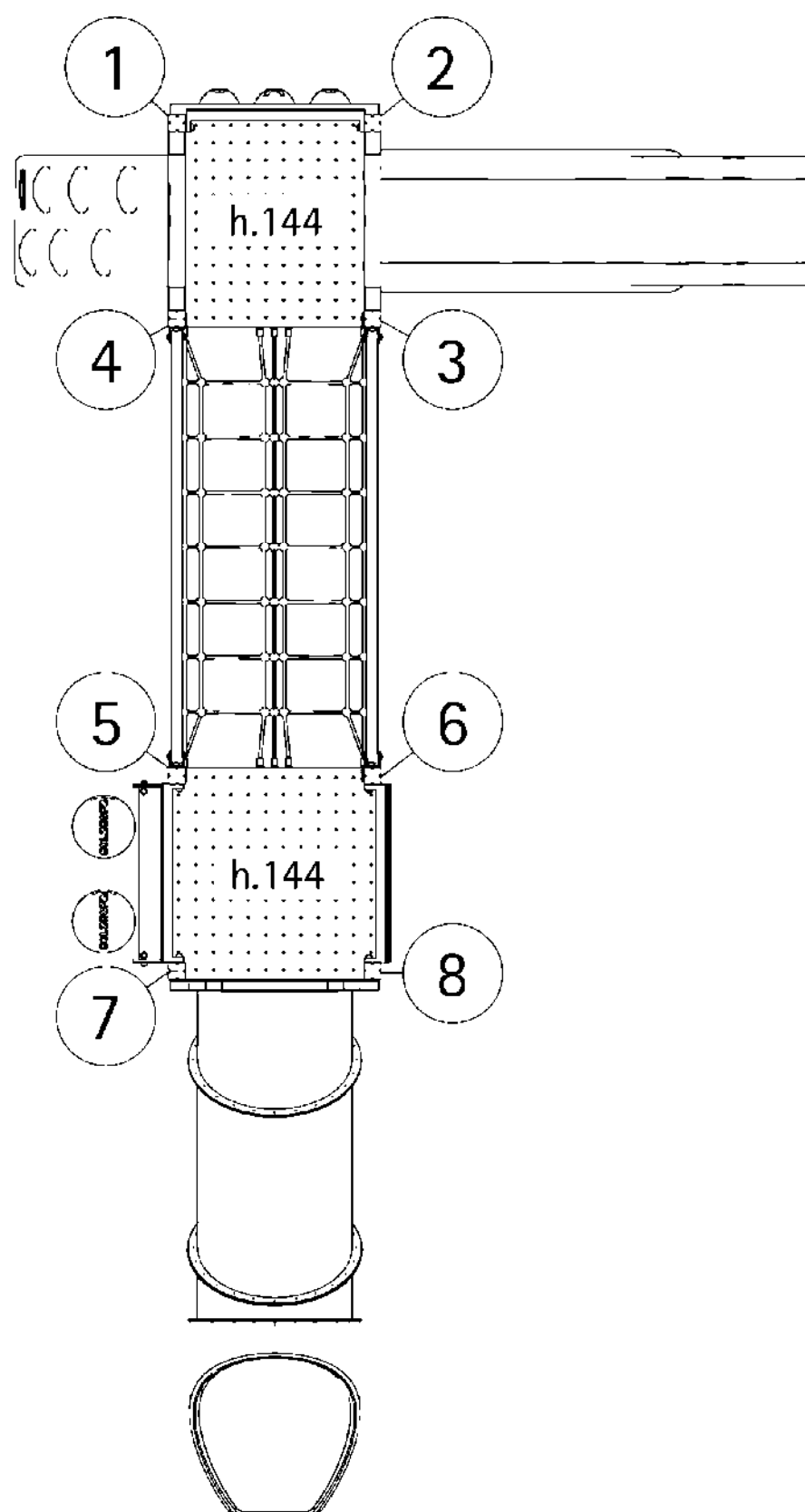
OXI XOXI 204 line  
assembly  
instructions




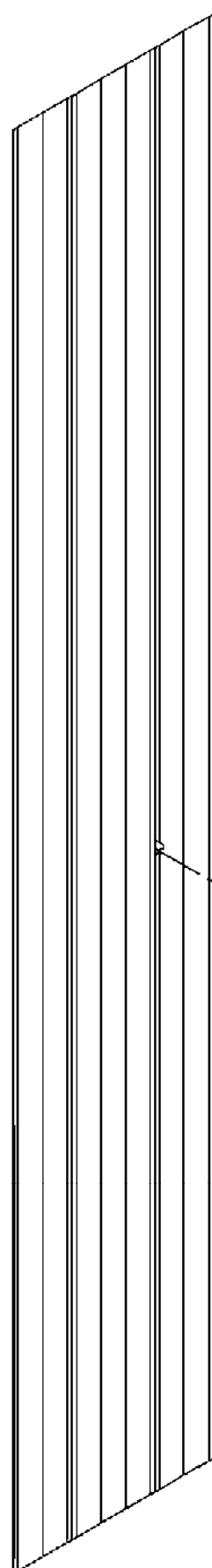
TIME SEQUENCE TO BE FOLLOWED:

- |                         |  |
|-------------------------|--|
| 1. STRUTS AND PLATFORMS | 7. PARAPETS  |
| 2. BRIDGE               | 8. NOUGHTS AND CROSSES ACTIVITY PANEL                |
| 3. PE ARCHWAYS          | 9. BENCHES   |
| 4. CLIMBING BOARD       | 10. ROOFS  |
| 5. PE CURVED SLIDE      | 11. PUFF   |
| 6. TUBE SLIDE           | 12. UNDERGROUND LAYING/ANCHORAGE OF THE<br>STRUCTURE |

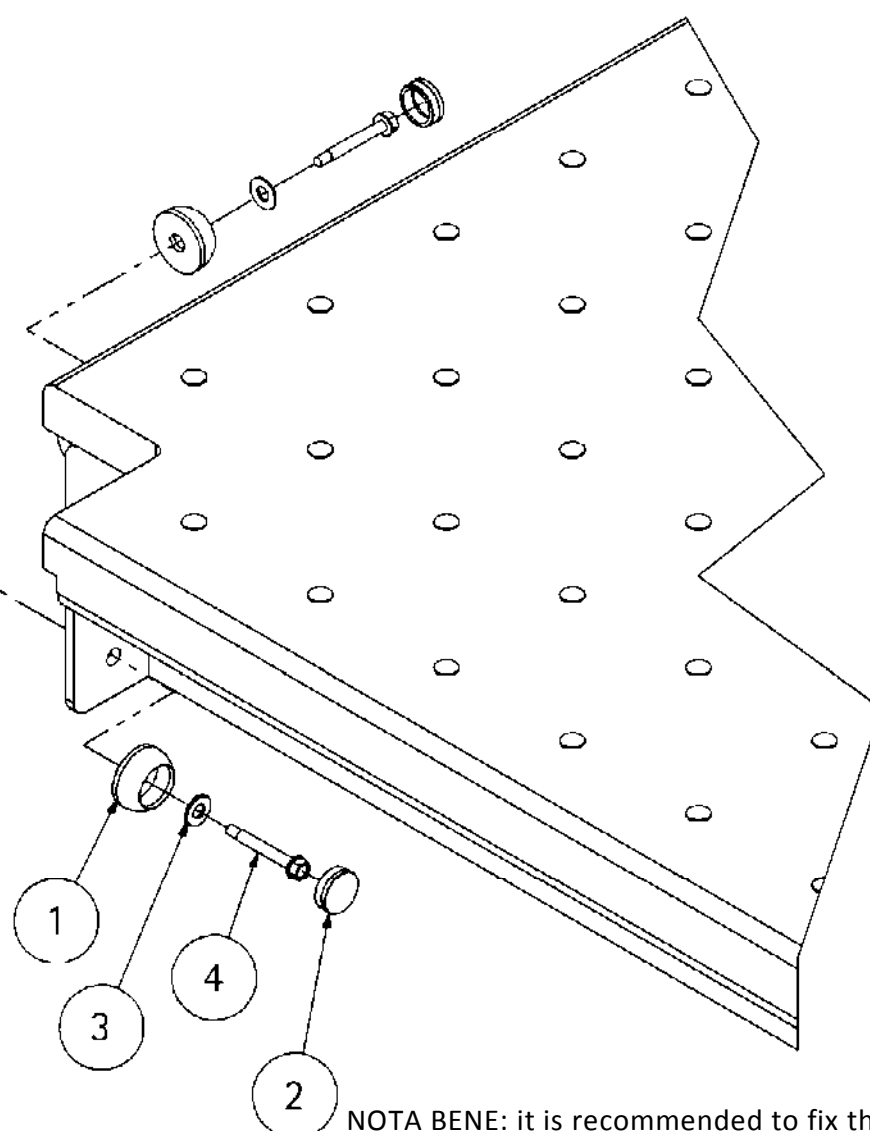
Le misure sono espresse in cm.	SOLZBOE		
Colori e modelli rappresentati sono puramente indicativi	denominazione e/o cliente :	istruzioni di montaggio LINEA OXI XOXI 204	
firma esecutore :	data : 17.06.2011	nr.	pag.1



Le misure sono espresse in cm.	SOLZOO	
Colori e modelli rappresentati sono puramente indicativi	denominazione e/o cliente :	istruzioni di montaggio LINEA OXI XOXI 204 schema montanti
firma esecutore : 	data : 08.08.2011	nr. pag.1



Article num.	Quantity	NAME
1	2	PE nut protection cap
2	2	PE cap
3	2	ISO7089 Ø8 washer
4	2	M6 3x60 TEFR SCREW



NOTA BENE: it is recommended to fix the bolts definitively and only insert the caps once the correct positioning of the elements has been verified.

Le misure sono espresse in cm.	SOLZBOE	
Colori e modelli rappresentati sono puramente indicativi	denominazione e/o cliente :	istruzioni di montaggio pianale e montanti linea OXI
firma esecutore :	data : 22.07.2011	nr. pag.1/1

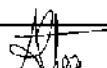
INSTRUCTION VALID FOR ALL  
THE TYPES OF BRIDGES,  
INCLINED OR STRAIGHT

1\_ Fix the bridge hand rail to the  
brackets already installed on the struts inserting  
the pin and fixing it via relevant bolts

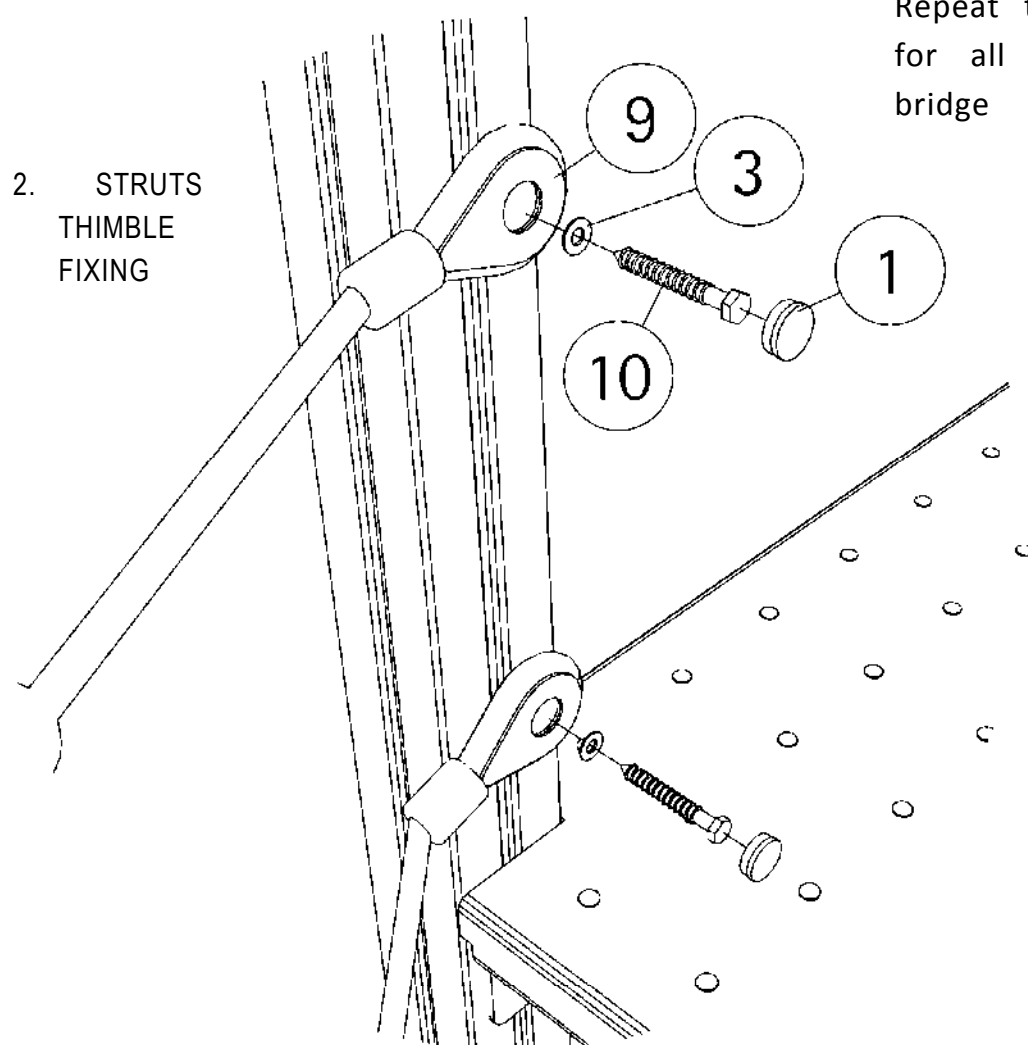
2. Fix the thimbles  
to the struts using  
the M6 5x60 TEFR  
screws

3. Fix the lower part of the bridge,  
inserting the threaded bars into the  
holes *present* on the platform frame, via  
washer and M10 nut with nut protection  
cap and cap.

NOTA BENE: it is recommended to fix the  
bolts definitively and only insert the caps  
once the correct positioning of the elements  
has been verified.

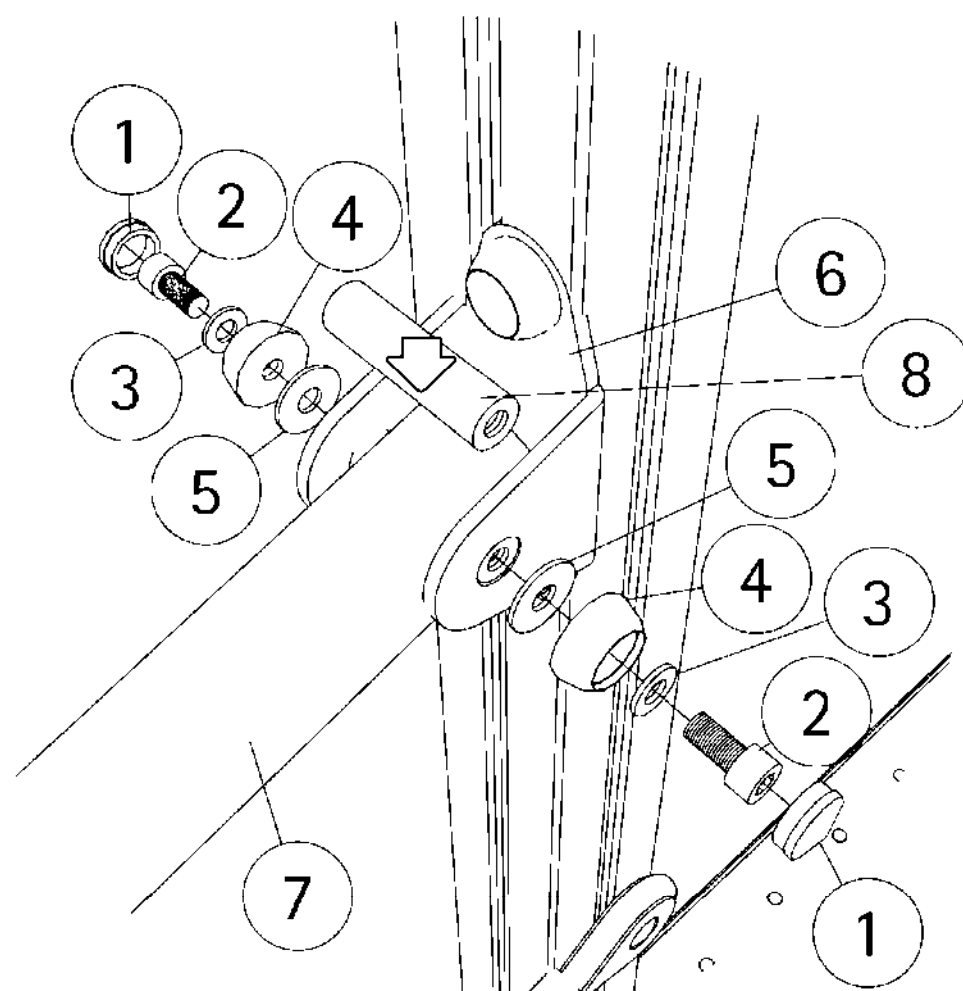
Le misure sono espresse in cm.	SOLZES	
Colori e modelli rappresentati sono puramente indicativi	denominazione e/o cliente :	istruzioni di montaggio ponte OXI
firma esecutore : 	data : 03.08.2011	nr. pag.1/

## 2. STRUTS THIMBLE FIXING



Repeat the operations  
for all sides of the  
bridge

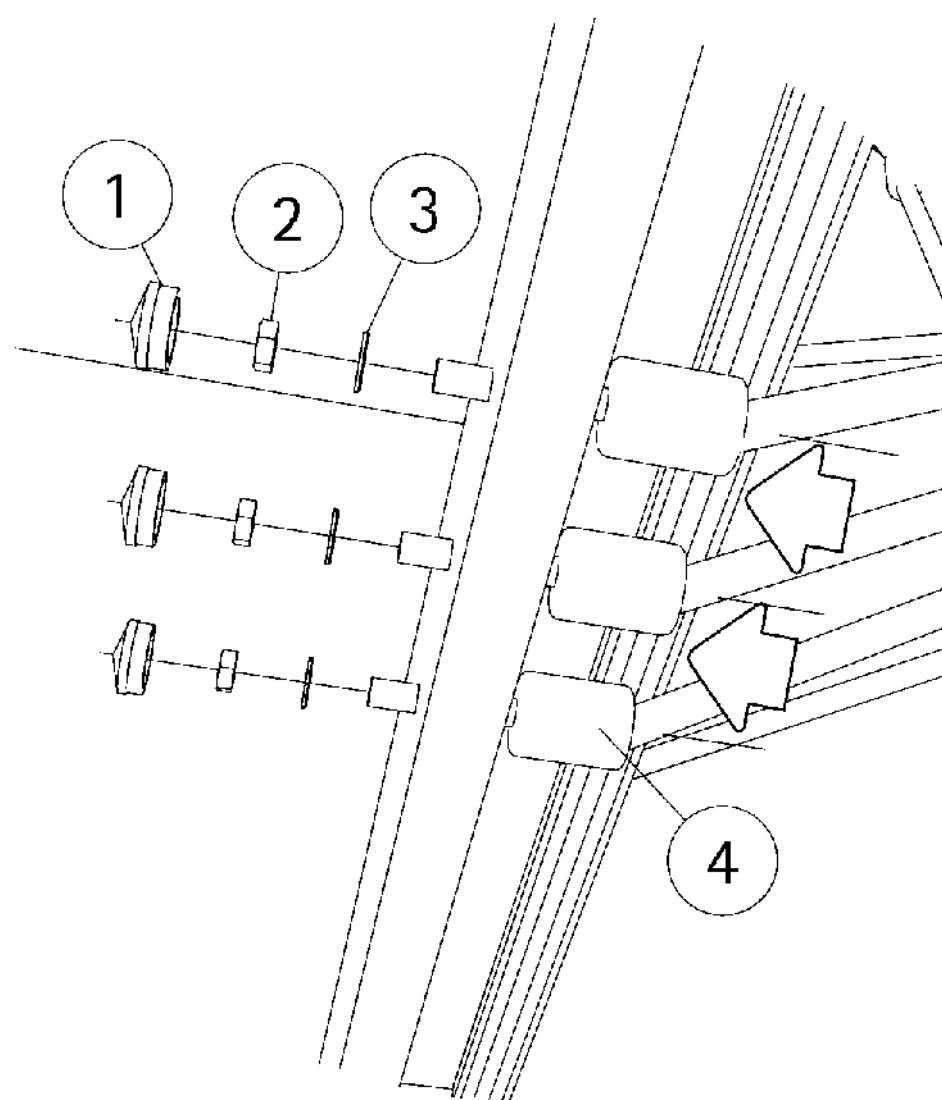
## 1. HAND RAIL/BRACKET FIXING

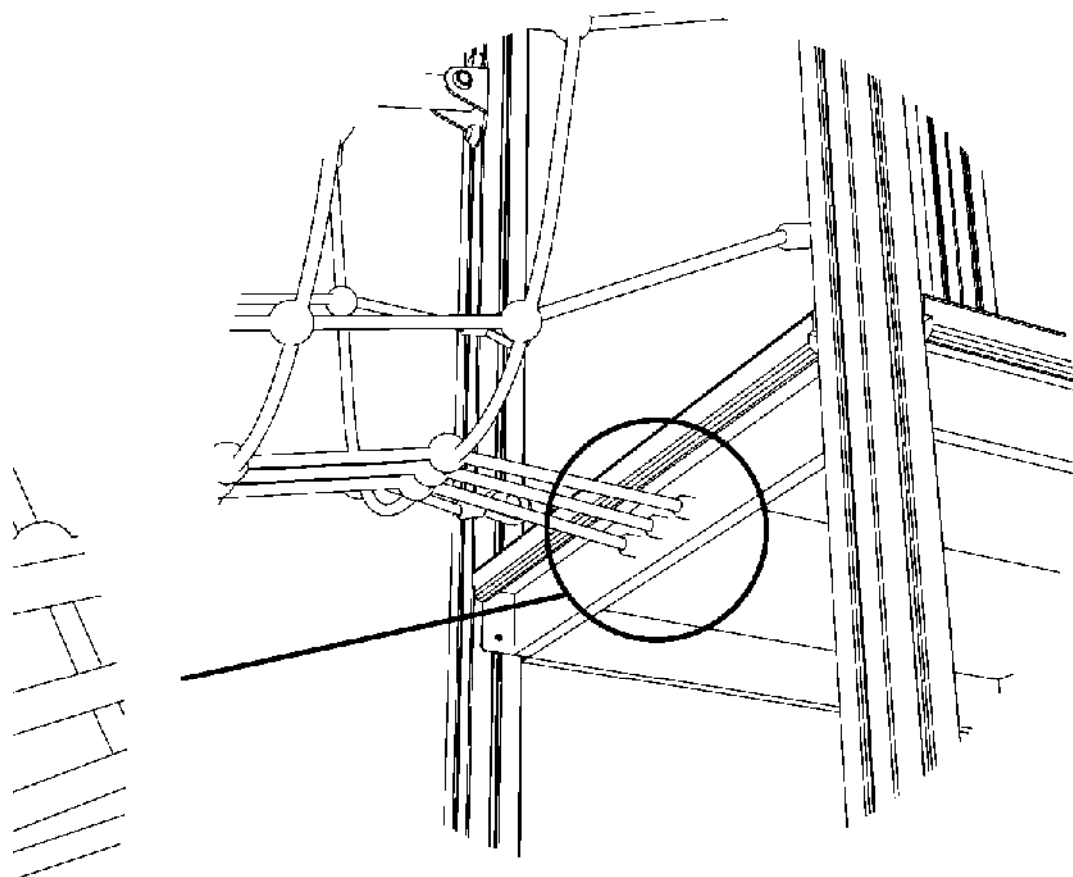


- |                             |                             |
|-----------------------------|-----------------------------|
| 1) PE cap                   | 6) bridge anchorage bracket |
| 2) M10x20 socket head screw | 7) bridge hand rail         |
| 3) Ø30 washer               | 8) pin                      |
| 4) PE nut protection cap    | 9) thimble                  |
| 5) Ø20 washer               | 10) M6 5x60 TEFR SCREW      |


Le misure sono espresse in cm.	SOLZE	
Colori e modelli rappresentati sono puramente indicativi	denominazione e/o cliente :	istruzioni di montaggio ponte OXI
firma esecutore :	data : 03.08.2011	nr. pag.2/3

- 1) PE cap (6x)
- 2) M10 self-locking nut (6x)
- 3) M10 washer (6x)
- 4) Threaded bar





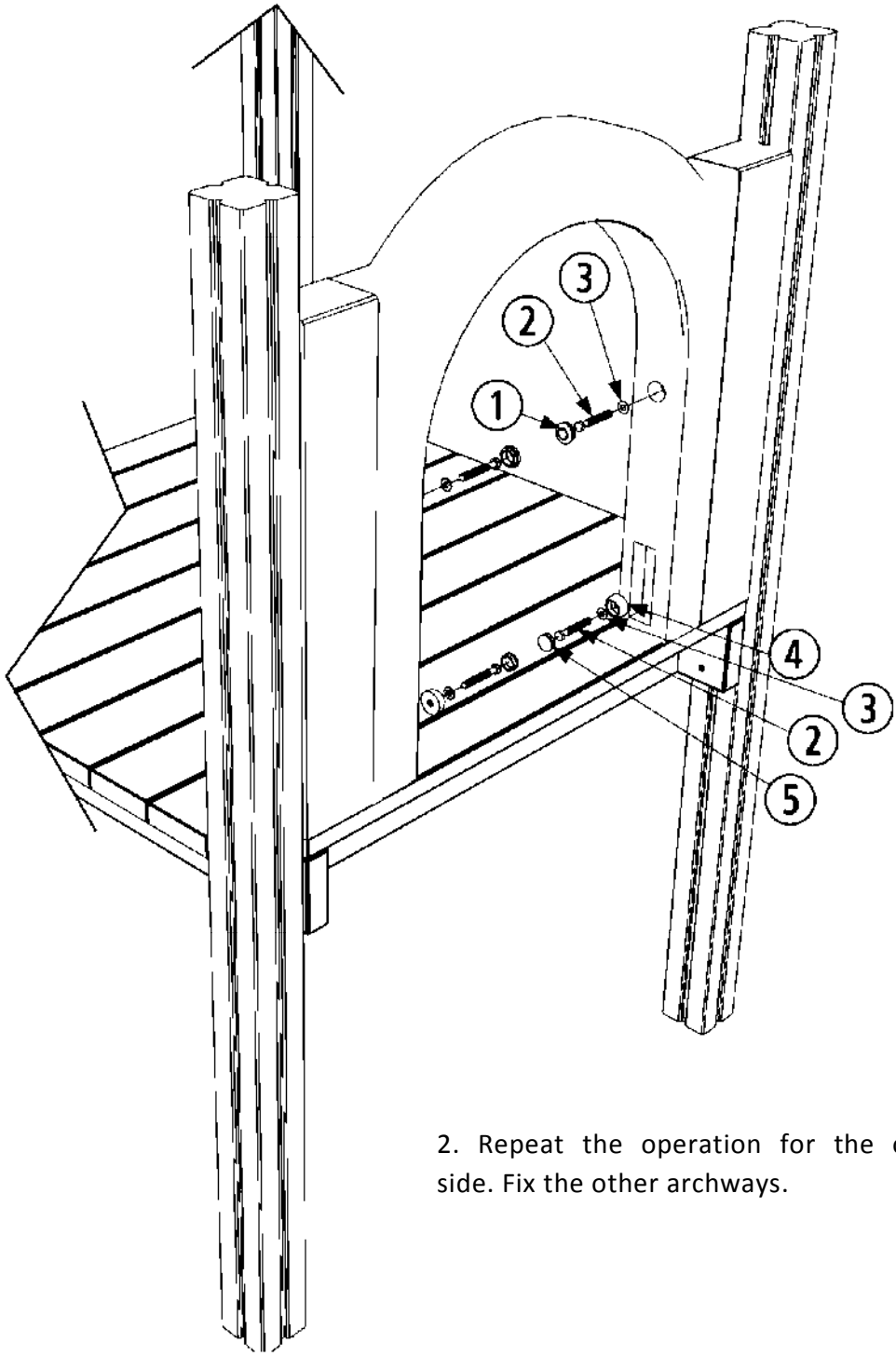
Repeat the operation for  
both sides of the bridge

Le misure sono espresse in cm.	SOLZHOE	
Colori e modelli rappresentati sono puramente indicativi	denominazione e/o cliente :	istruzioni di montaggio ponte OXI
firma esecutore : 	data : 03.08.2011	nr. pag.3/3





NOTA BENE: it is recommended to fix the bolts definitively and only insert the caps once the correct positioning of the elements has been verified.

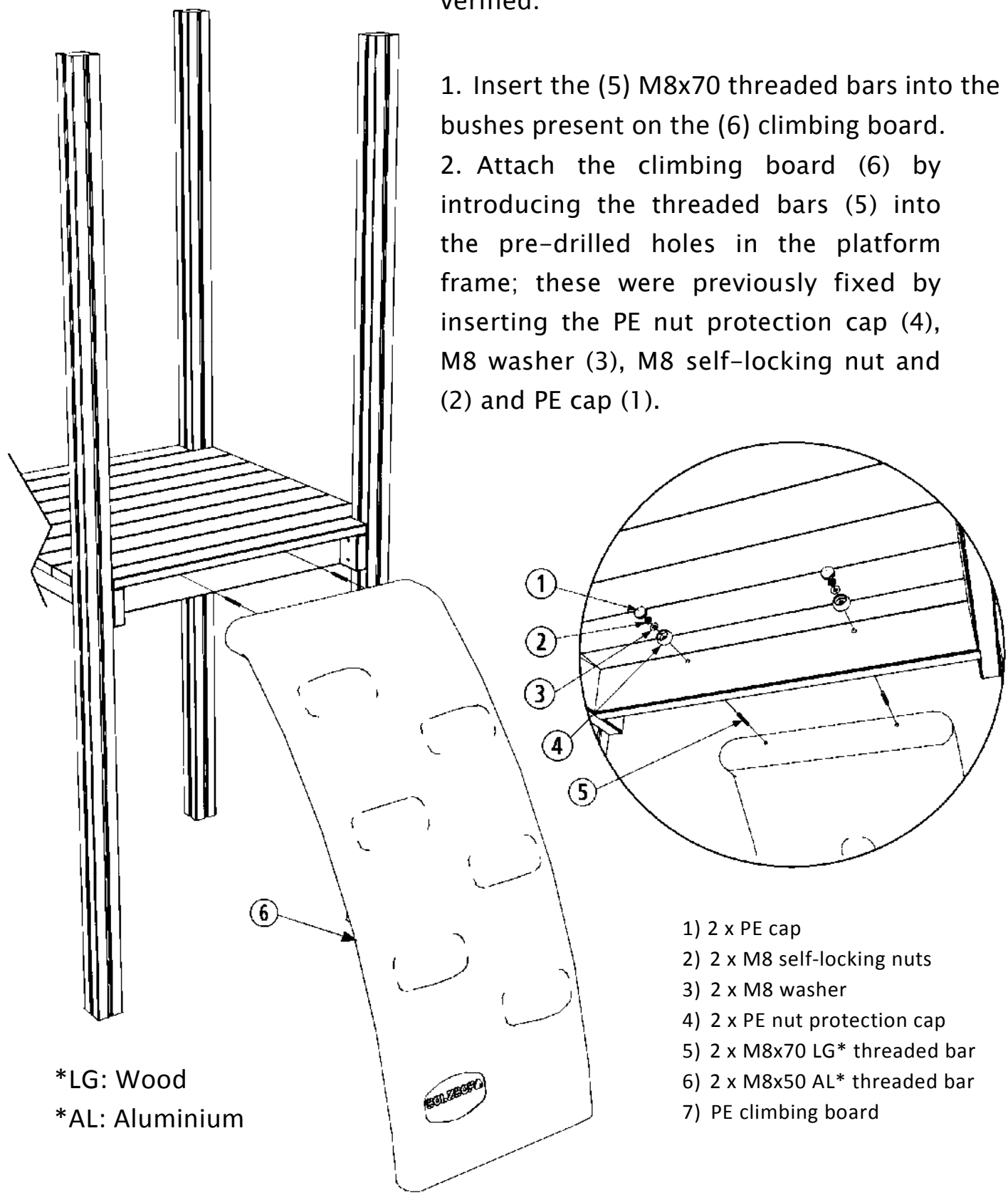
1. Position the archway between the struts and fix it by inserting: 1 x M8 washer (3), 1 x M8x260 TORX screw (2), 1 x Ø25 mm. winged PE cap (1) into the upper part;  
1 x PE nut protection cap (4), 1 x M8 washer (3),  
1 x M8x260 TORX screw (2), 1 x PE cap (5) into the lower part.



2. Repeat the operation for the opposite side. Fix the other archways.

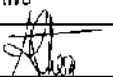
Le misure sono espresse in cm.		
Colori e modelli rappresentati sono puramente indicativi	denominazione e/o cliente :	istruzioni montaggio entrata in Pe MAX-SULTAN-OXI-OASIS
firma esecutore : 	data : 03.03.2011	nr. pag. 1/1

NOTA BENE: it is recommended to fix the bolts definitively and only insert the caps once the correct positioning of the elements has been verified.



\*LG: Wood  
\*AL: Aluminium

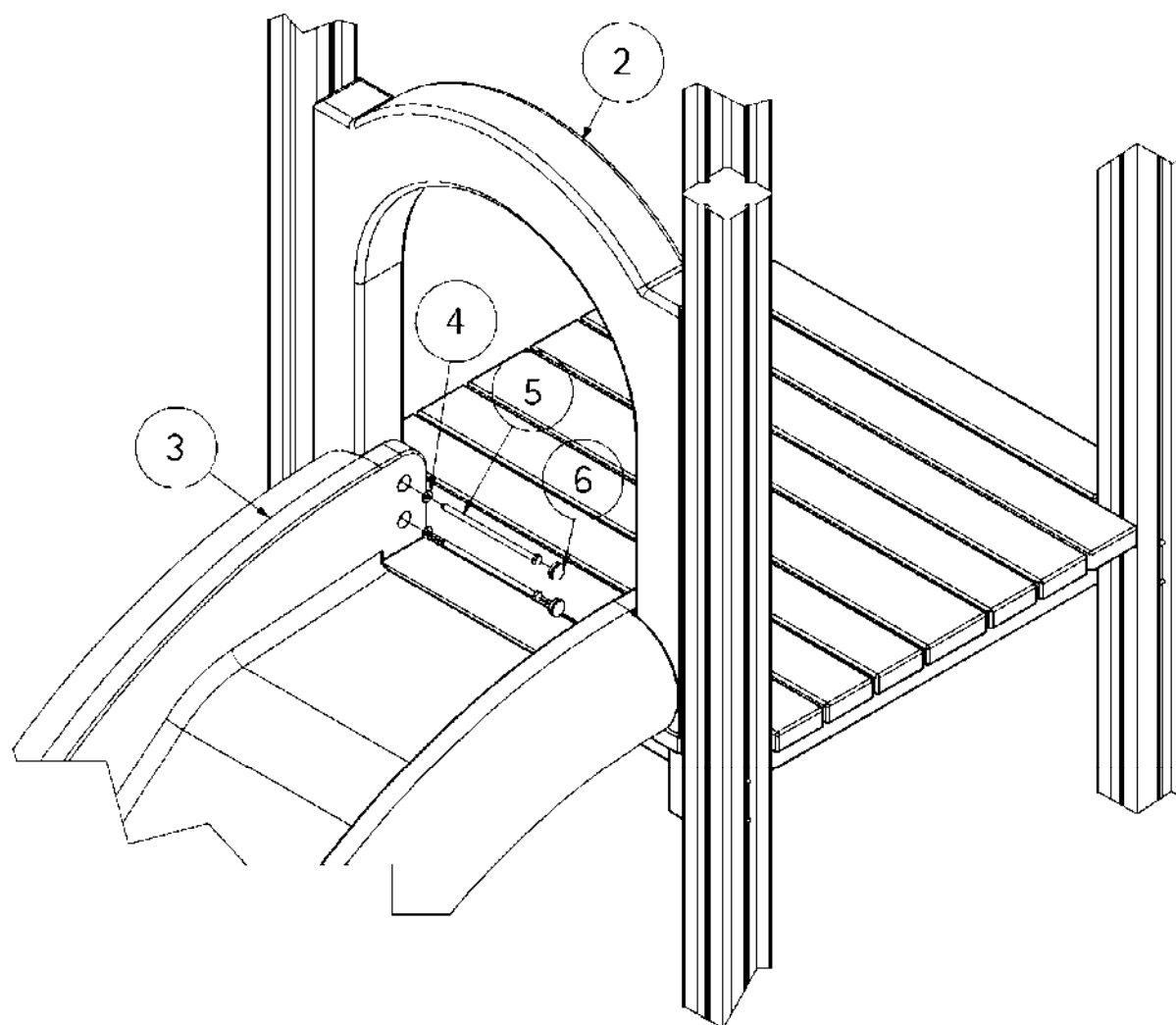
- 1) 2 x PE cap
- 2) 2 x M8 self-locking nuts
- 3) 2 x M8 washer
- 4) 2 x PE nut protection cap
- 5) 2 x M8x70 LG\* threaded bar
- 6) 2 x M8x50 AL\* threaded bar
- 7) PE climbing board

Le misure sono espresse in cm.		SOLZHOE	
Colori e modelli rappresentati sono puramente indicativi La pedana di risalita può essere da 84 o 144 cm Il pianale rappresentato è indicativo		denominazione e/o cliente :	istruzioni di montaggio Pedana di risalita Pe Max / Sultan / Aladin / oxi
firma esecutore :		data : 17.06.2011	nr. pag.1

Article num.	Default/Quantity	NAME
1	1	Aladin tower
2	1	Aladin PE archway
3	1	Curved slide h.84
4	4	ISO7089 Ø8 washer
5	4	M8x180 TORX screw
6	4	PE cap

1. After having fixed the PE archway (2), place the body of the (3) curved slide on the platform of the tower (1) and insert the bolts necessary for fixing into the holes present on the slide (3).
2. Check correct positioning, verticality and parallelism. Fix the bolts definitively and position the caps.
3. Repeat the operation also on the other side of the slide

NOTE: COLOURS AND MODELS  
REPRESENTED ARE PURELY  
INDICATIVE

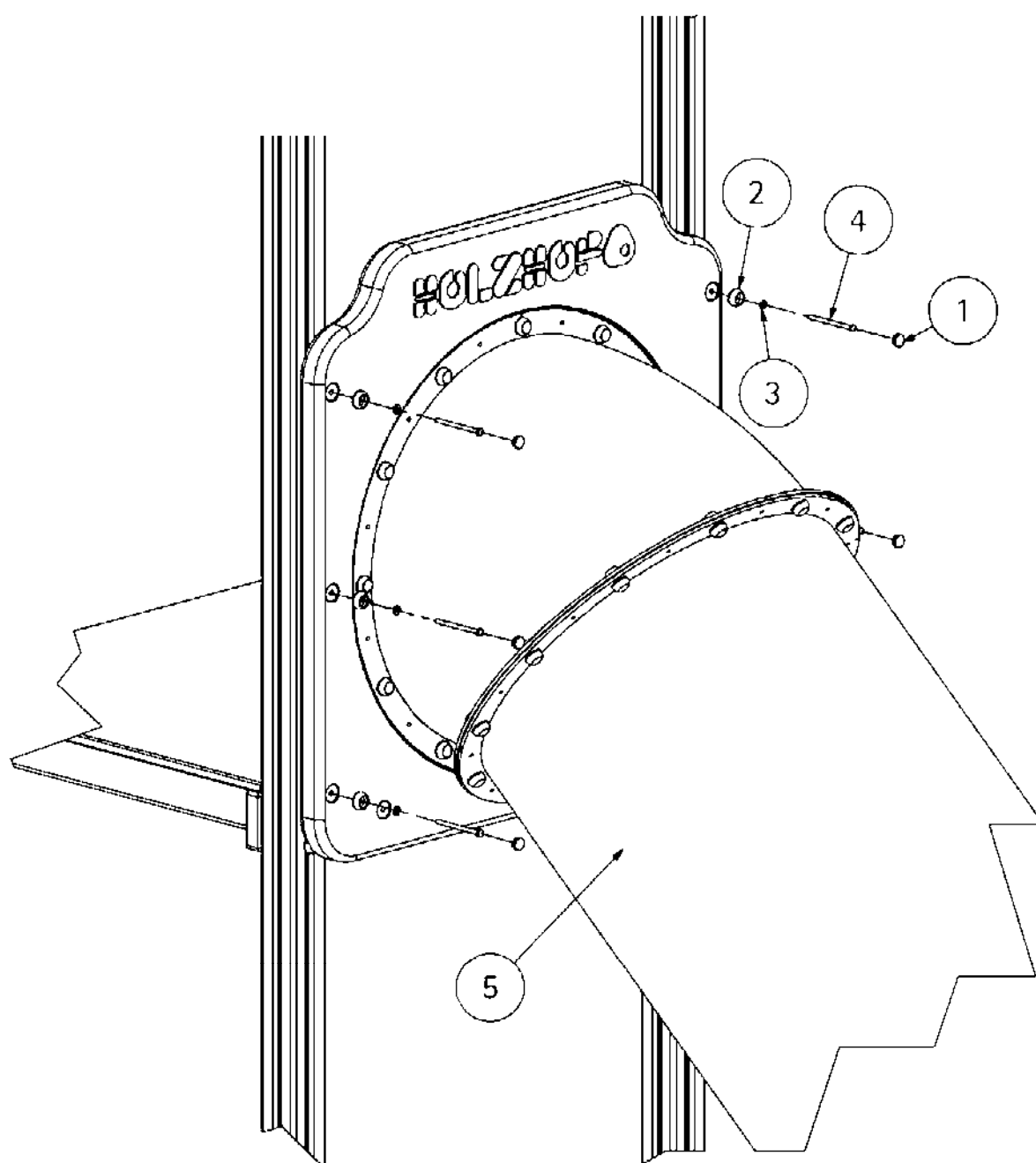


Le misure del disegno sono espresse in	cm.	<b>HOLZHOFF</b>
<b>tolleranze generali applicate:</b> *Sezione/diametro legno: impregnato $\pm 0,5$ (cm) *Lunghezza legno: impregnato $\pm 0,2$ (cm) *Lavorazioni legno: impregnato $\pm 0,2$ (cm) *Componenti in metallo $\pm 1$ (mm) *Componenti in altri materiali plastici $\pm 1,5$ (mm)	denominazione c/o cliente:	istruzioni di montaggio scivolo curvo pe con entrata in linea ALADIN - MAX - SULTAN - OXI - OASIS
firma esecutore:	<i>Altieri</i>	data: 03.03.2011    nr. pag. 1/1

- 1) PE cap (6x)
- 2) PE nut protection cap (6x)
- 3) M8 washer (6x)
- 4) M8x130 (6x) LG\* TEL screw
- 5) M6 3x100 TEFR screw (6x) AL\*


1. Position the curved slide (5) assembled to the tower, keeping the entry to the tube in correspondence with the height of the platform.
2. Fix using the relevant bolts, as indicated in the figure.

The following instructions are also valid for the tube bridge.

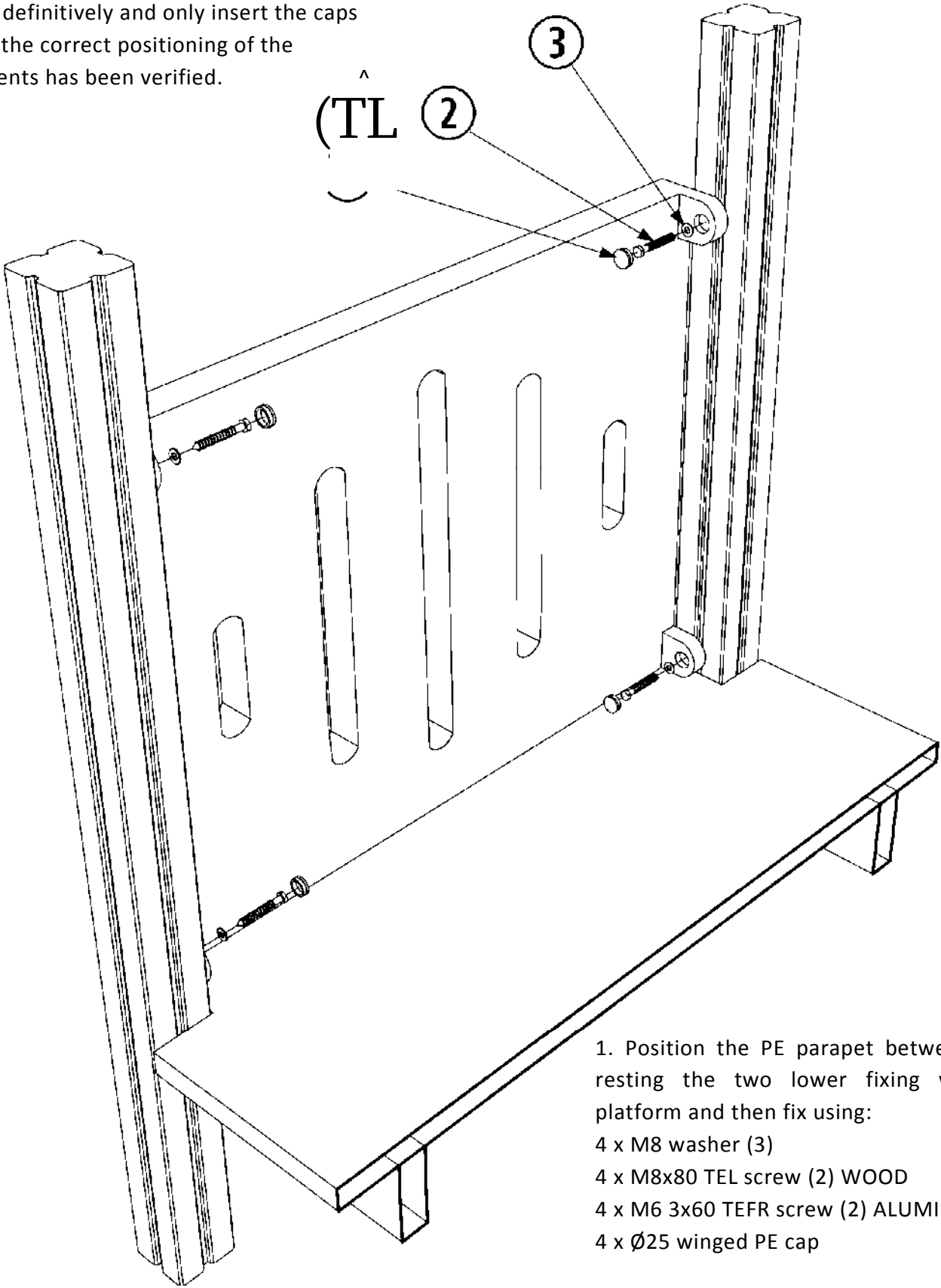


\* LG: wood  
\* AL: aluminium

NOTA BENE: it is recommended to fix the bolts definitively and only insert the caps once the correct positioning of the elements has been verified.


Le misure sono espresse in cm.	SOLZOO	
Colori e modelli rappresentati sono puramente indicativi	denominazione e/o cliente :	istruzioni di montaggio scivolo tubo
firma esecutore : 	data : 17.06.2011	nr. pag.1/1

NOTA BENE: it is recommended to fix the bolts definitively and only insert the caps once the correct positioning of the elements has been verified.



1. Position the PE parapet between the struts, resting the two lower fixing wings on the platform and then fix using:  
 4 x M8 washer (3)  
 4 x M8x80 TEL screw (2) WOOD  
 4 x M6 3x60 TEFR screw (2) ALUMINIUM  
 4 x Ø25 winged PE cap

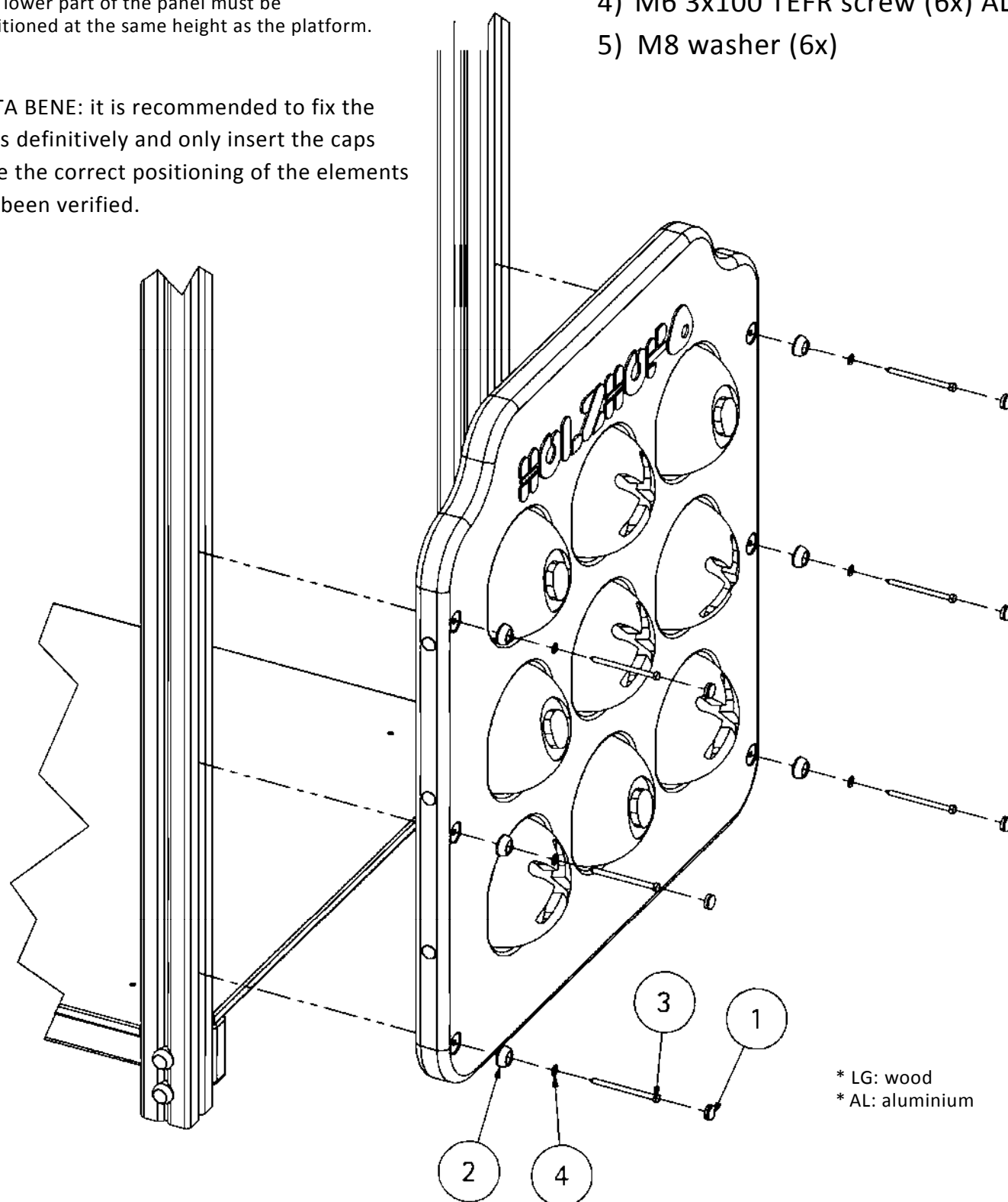
2. If necessary, repeat the operation on the other parapets.

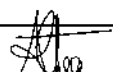
Le misure sono espresse in cm.	SOLZERO	
Colori e modelli rappresentati sono puramente indicativi	denominazione e/o cliente :	istruzioni montaggio parapetto in Pe Max/Sultan/Oxi
firma esecutore : 	data : 16.06.2011	nr. pag. 1/1

1. Fix the panel in PE to the struts using the relevant bolts, as indicated in the figure.  
The instructions can be applied to all multifunction panels in PE; the procedure does not change.  
The lower part of the panel must be positioned at the same height as the platform.

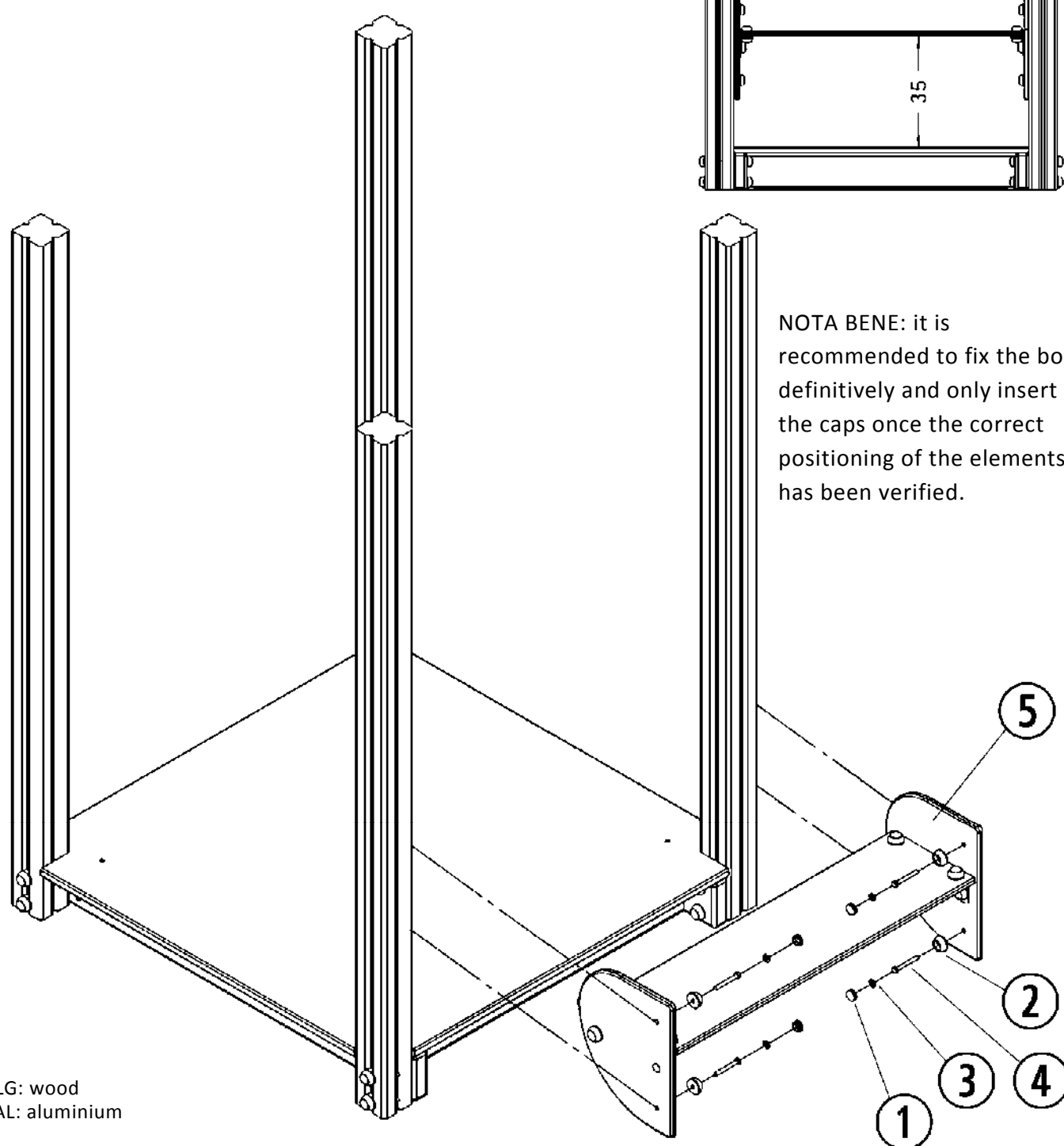
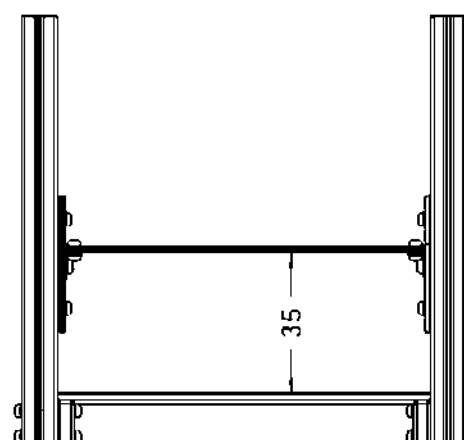
- 1) PE cap (6x)
- 2) PE nut protection cap (6x)
- 3) M8x130 (6x) LG\* TEL screw
- 4) M6 3x100 TEFR screw (6x) AL\*
- 5) M8 washer (6x)

NOTA BENE: it is recommended to fix the bolts definitively and only insert the caps once the correct positioning of the elements has been verified.



Le misure sono espresse in cm.	SOLZOO	
Colori e modelli rappresentati sono puramente indicativi	denominazione e/o cliente :	istruzioni di montaggio pannello multifunzione in pe
firma esecutore : 	data : 17.06.2011	nr. pag.1/1

- 1) PE cap (4x)
- 2) PE nut protection cap (4x)
- 3) M8 washer (4x)
- 4) M8x80 (4x) LG\* TEL screw
- 5) M6 3x60 (4x) AL\* TEFR screw
- 6) Assembled bench

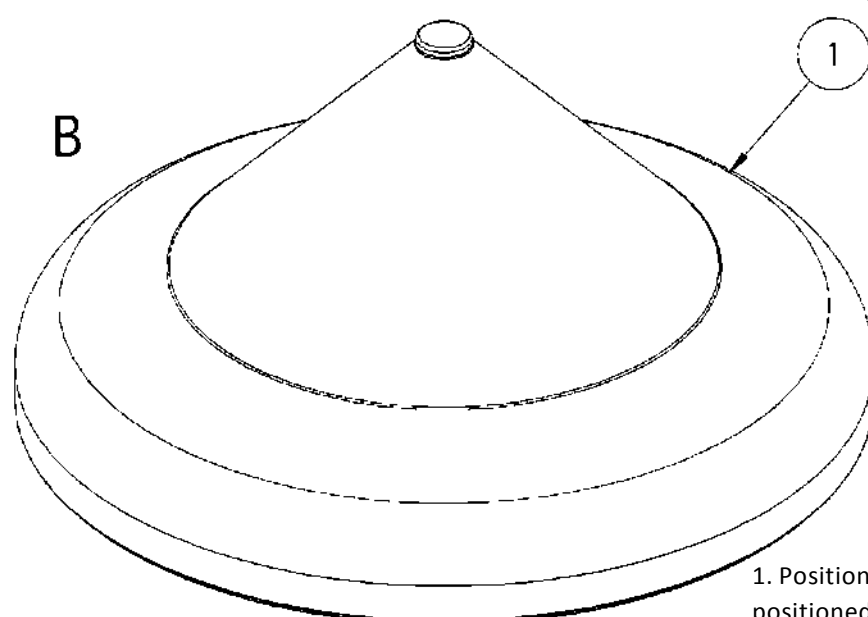
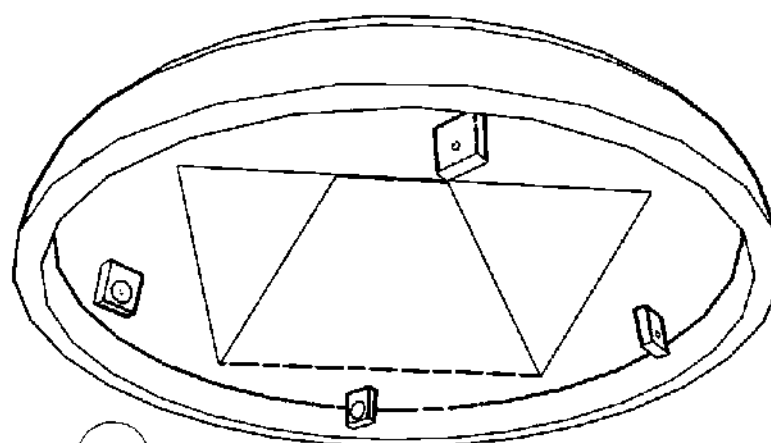


NOTA BENE: it is recommended to fix the bolts definitively and only insert the caps once the correct positioning of the elements has been verified.

\* LG: wood  
\* AL: aluminium

Le misure sono espresse in cm.	SOLZOO		
Colori e modelli rappresentati sono puramente indicativi	denominazione e/o cliente :	istruzioni di montaggio panchina giochi	
firma esecutore :	data : 17.06.2011	nr.	pag.1/1

Article num.	Default/Quantity	CODE N.	NAME
1	1	-	PE roof
2	4	xpe10	PE nut protection cap
3	4	xpe116	PE cap
4	4		ISO7089 Ø8 washer
6	4		M8x80 TEL screw

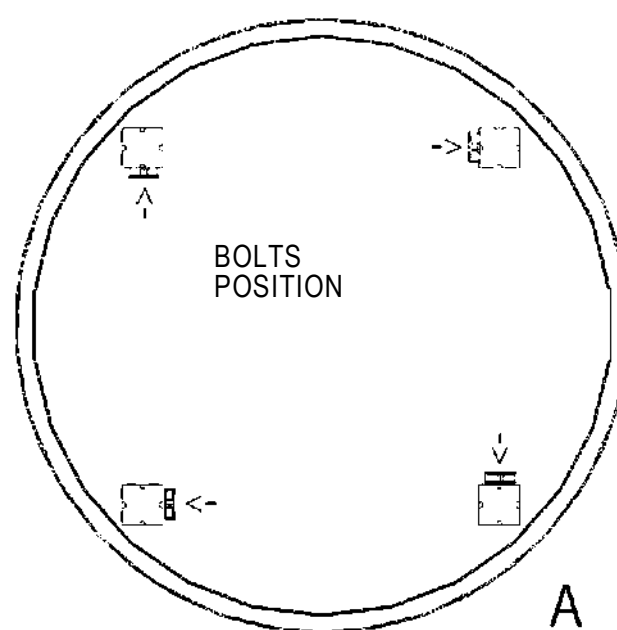
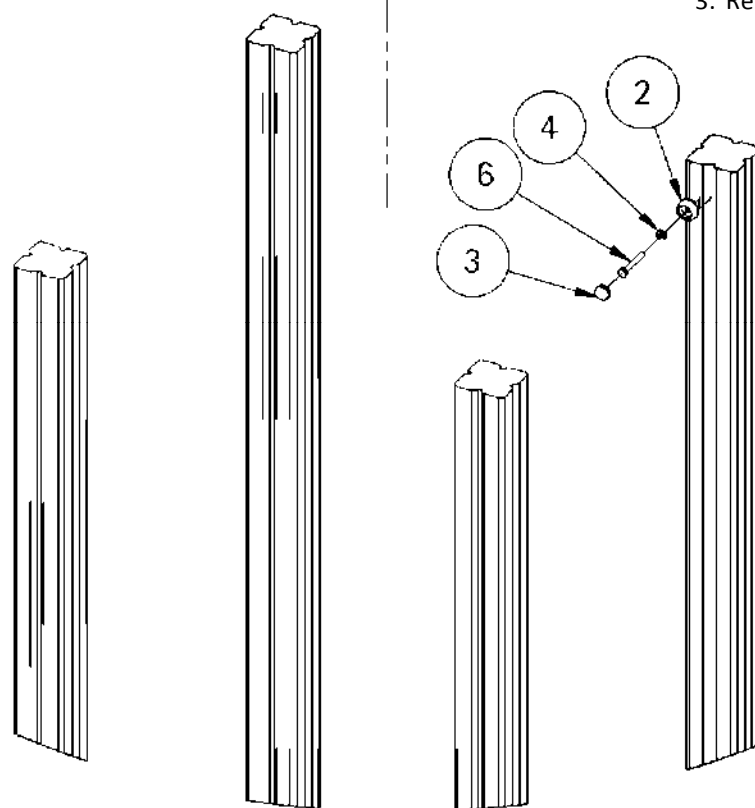


# NOTE:

The models represented are purely indicative.

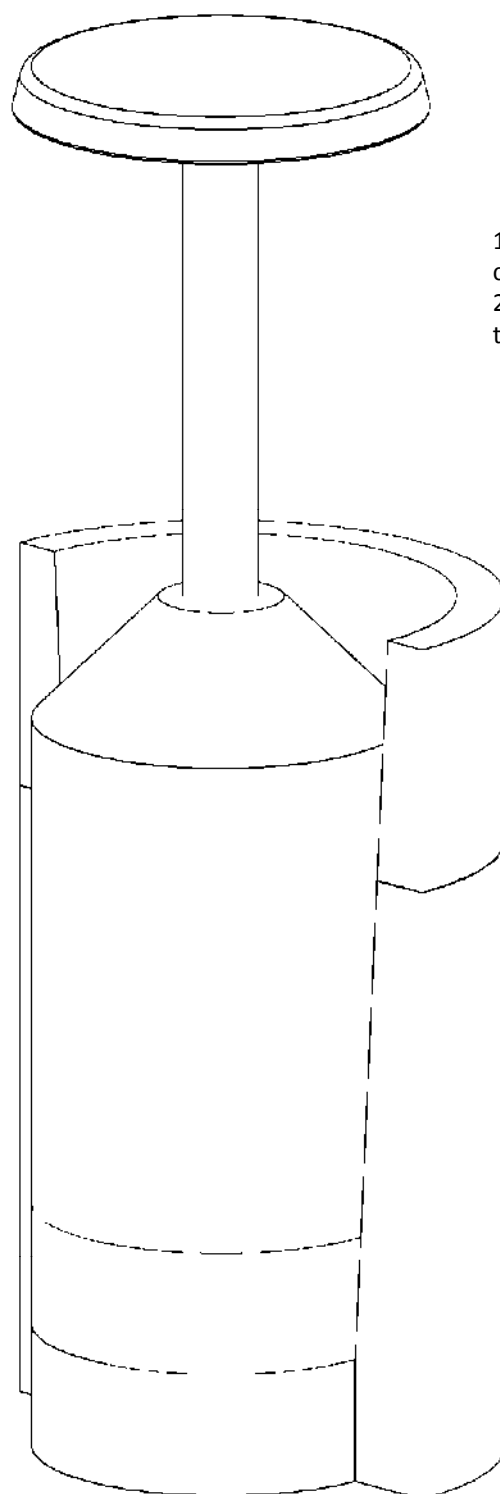
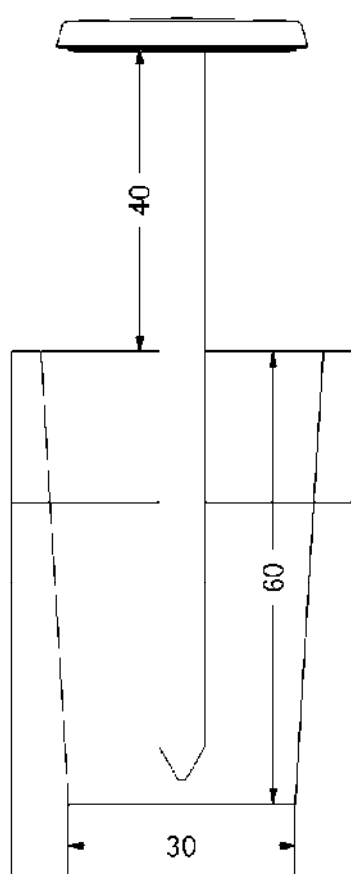
These instructions are applicable to Max, Sultan and Aladin roofs.

1. Position the roof on top of the struts with the brackets positioned as in figure A.
2. Insert the bolts necessary for fixing in sequence, as indicated in figure B.
3. Repeat the operation on all 4 struts.



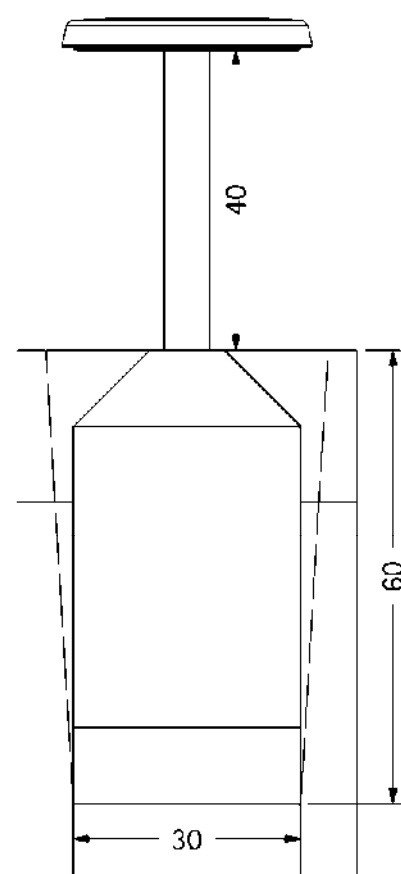
Le misure del disegno sono espresse in cm	HOLZHOFF
Tolleranze generali applicate: *Sezioni/diametro legname impregnato $\pm 0.5$ (cm) *Lunghezza legname impregnato 1% (lung. totale) *Lavorazioni legname impregnato $\pm 0.2$ (cm) *Componenti in metallo $\pm 1$ (mm) *Componenti in altri materiali plastici $\pm 1.5$ (mm)	denominazione e/o cliente: istruzioni di montaggio tetto in polietilene Linea Max / Sultan / Aladin
firma esecutore: <i>Altiani</i>	data: 27.07.2010   nr.   pag. 1



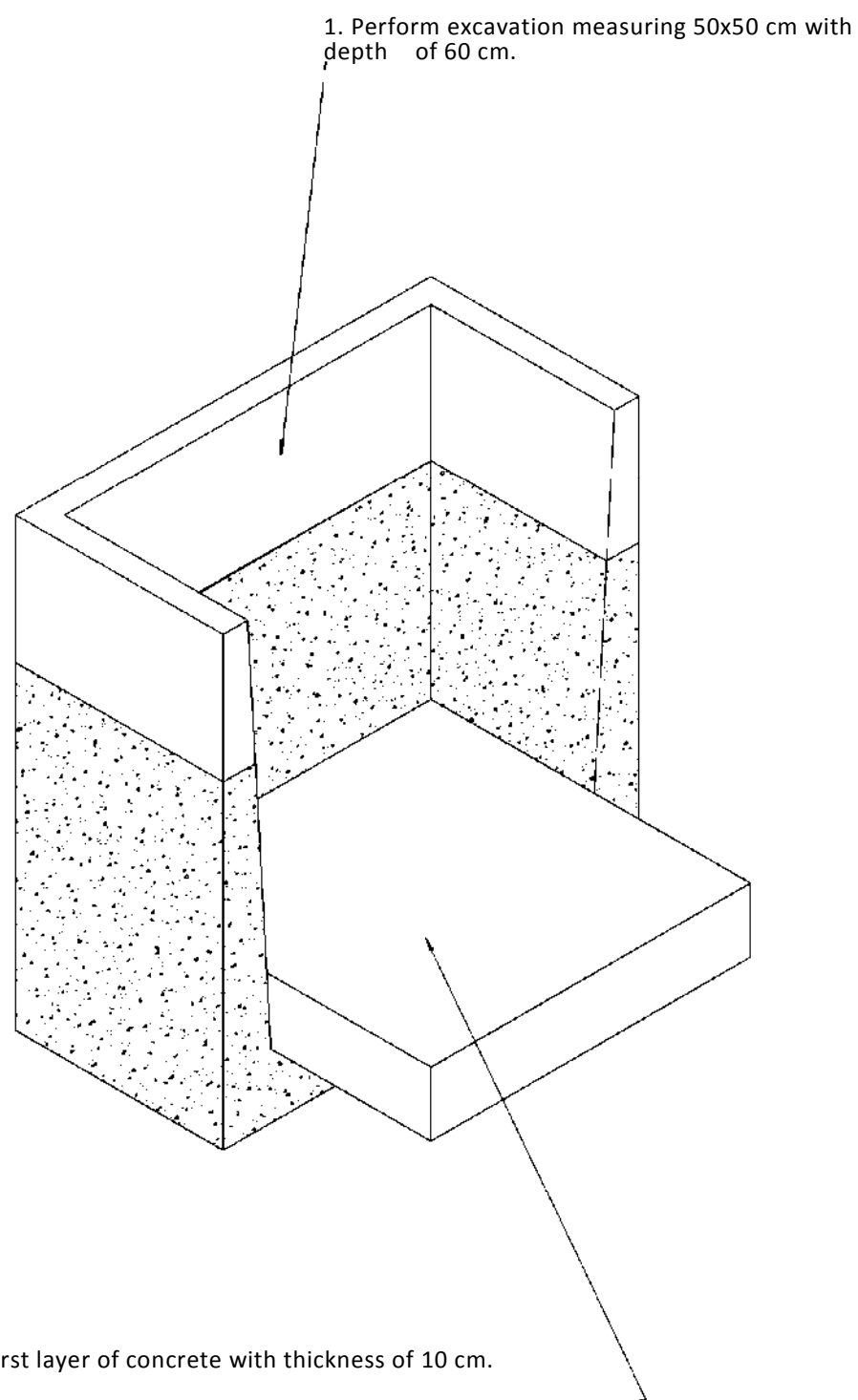


1. Excavate a hole with diameter of 30 cm and depth of 60 cm as per layout.
2. Cast a first layer of concrete with thickness of 10 cm.

3. Complete concrete casting as per layout.
4. When the concrete has set, fill the hole by compacting the infill material up to the finished ground level.

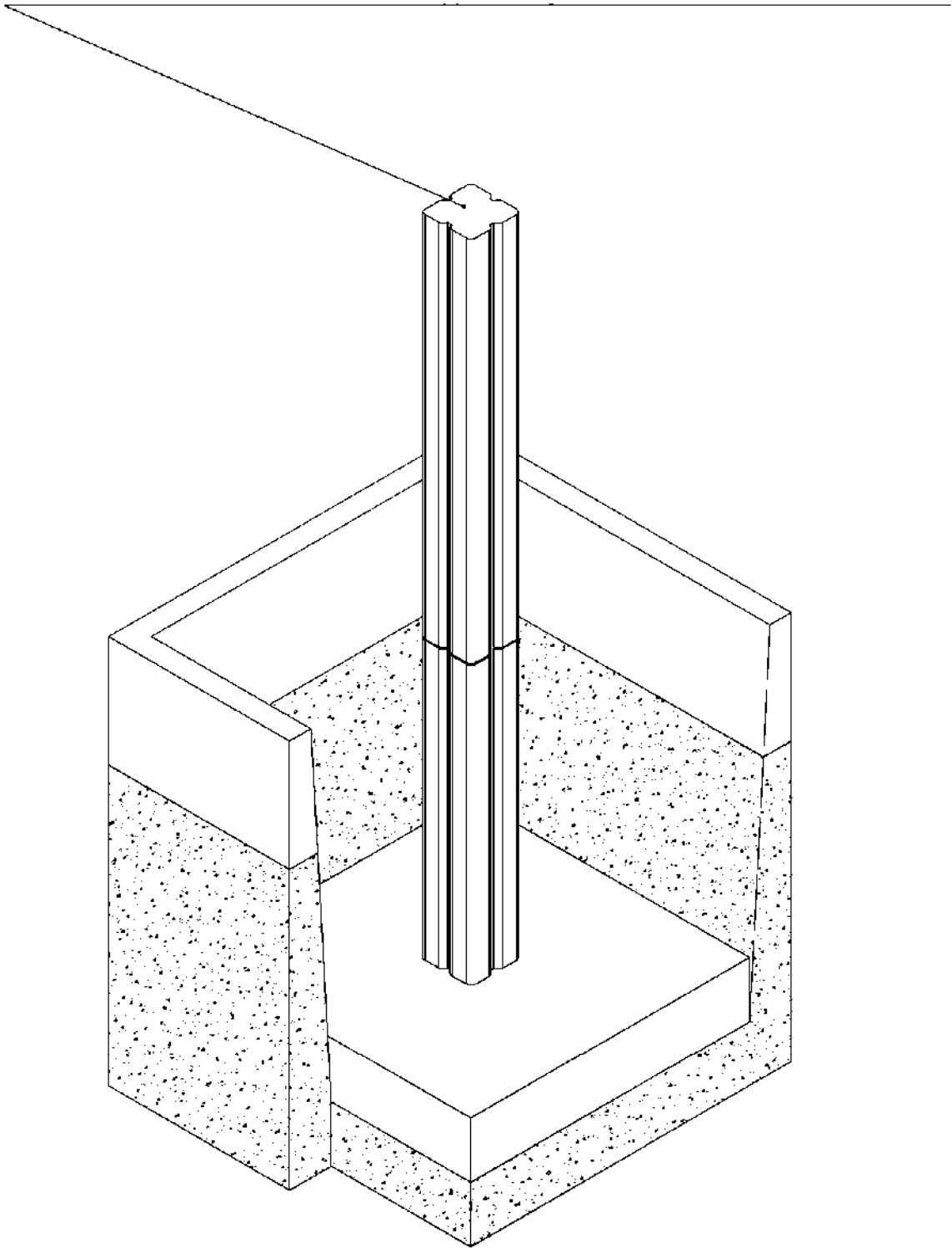



Le misure del disegno sono espresse in cm.		HOLZHOFF	
Tolleranze generali applicate: *Sezione/diametro legno: $\pm 0.5$ (cm) *Lunghezza: legno: $\pm 0.5$ (cm) / $\pm 0.2$ (cm) *Lavorazioni legno: $\pm 0.2$ (cm) *Componenti in metallo: $\pm 1$ (mm) *Componenti in altri materiali plastici: $\pm 1.5$ (mm)		denominazione e/o cliente:	istruzioni di montaggio interro Puff
firma esecutore:	Altieri	data:	12.02.07
		nr.	pag.1

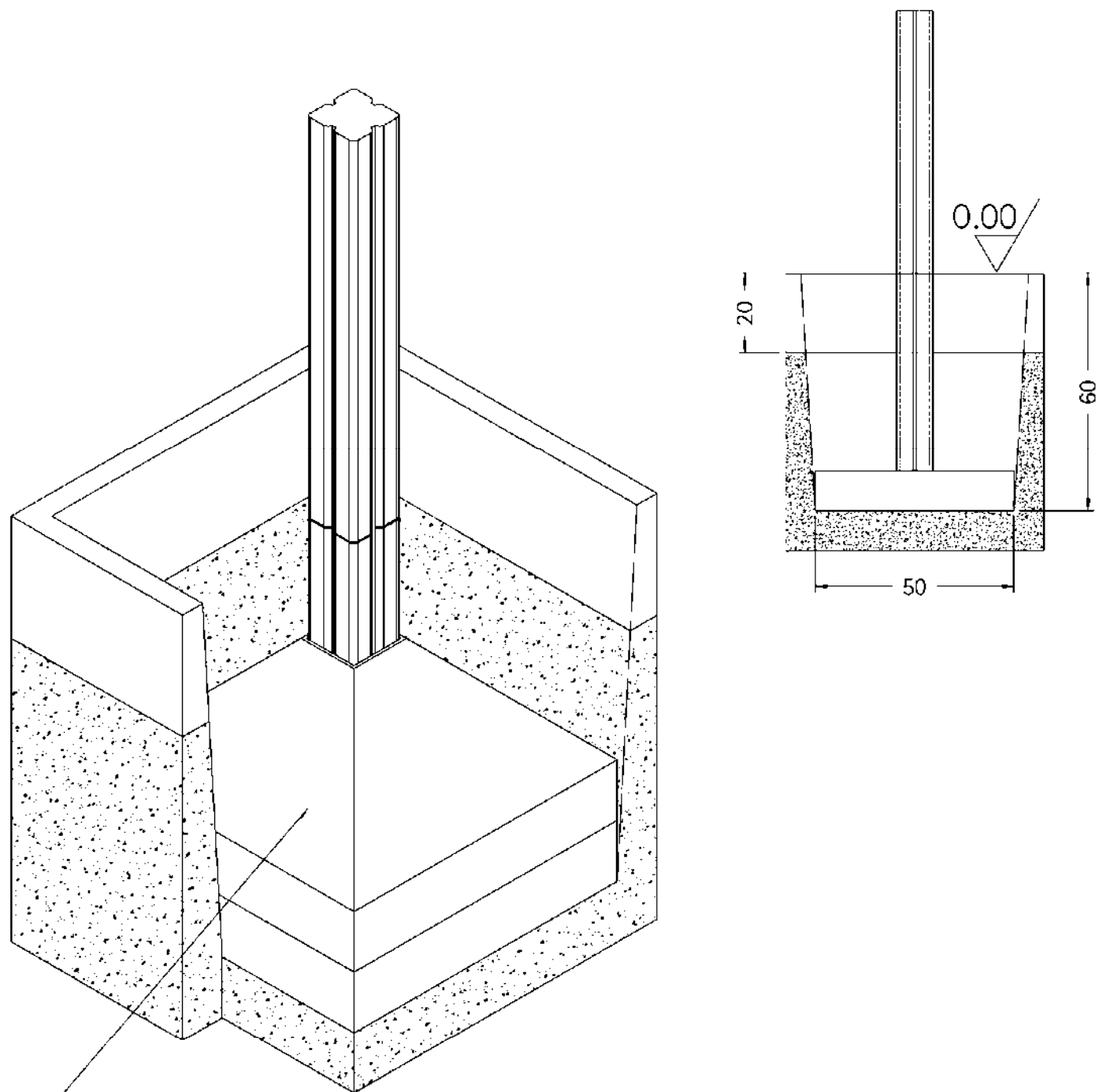


Le misure del disegno sono espresse in CM		HOLZHOFF	
Tolleranze generali applicate: *Sezione/diametro legname impregnato $\pm 0.5$ (cm) *Lunghezza legname impregnato $\pm 0.1$ (lung. totale) *Lavorazioni legname impregnato $\pm 0.2$ (cm) *Componenti in metallo $\pm 1$ (mm) *Componenti in altri materiali plastici $\pm 1.5$ (mm)		denominazione e/o cliente:	Istruzioni di montaggio interro montanti
firma esecutore:	Altieri	data:	31.05.05 nr. Pag.1

3. When the concrete has set, position the strut/s in the centre checking the correct alignment of the relevant mark with the finished ground level.



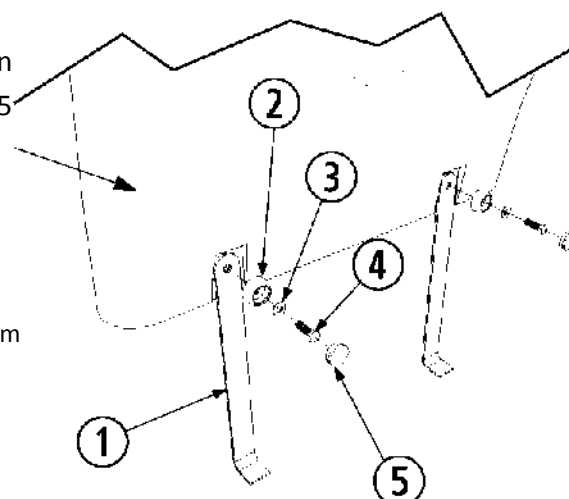
Le misure del disegno sono espresse in      cm			
<small>Tolleranze generali applicate: *Sezione/diametro legname impregnato ± 0.5 (cm) *Lunghezza legname impregnato 19% (lung. totale) *Lavorazioni legname impregnato + 0.2 (cm) *Componenti in metallo ± 1 (mm) *Componenti in altri materiali plastici ± 1.5 (mm)</small>		denominazione e/o cliente:	Istruzioni di montaggio interro montanti
firma esecutore:	<i>Altieri</i>	data:	31.05.05      nr.      Pag.2



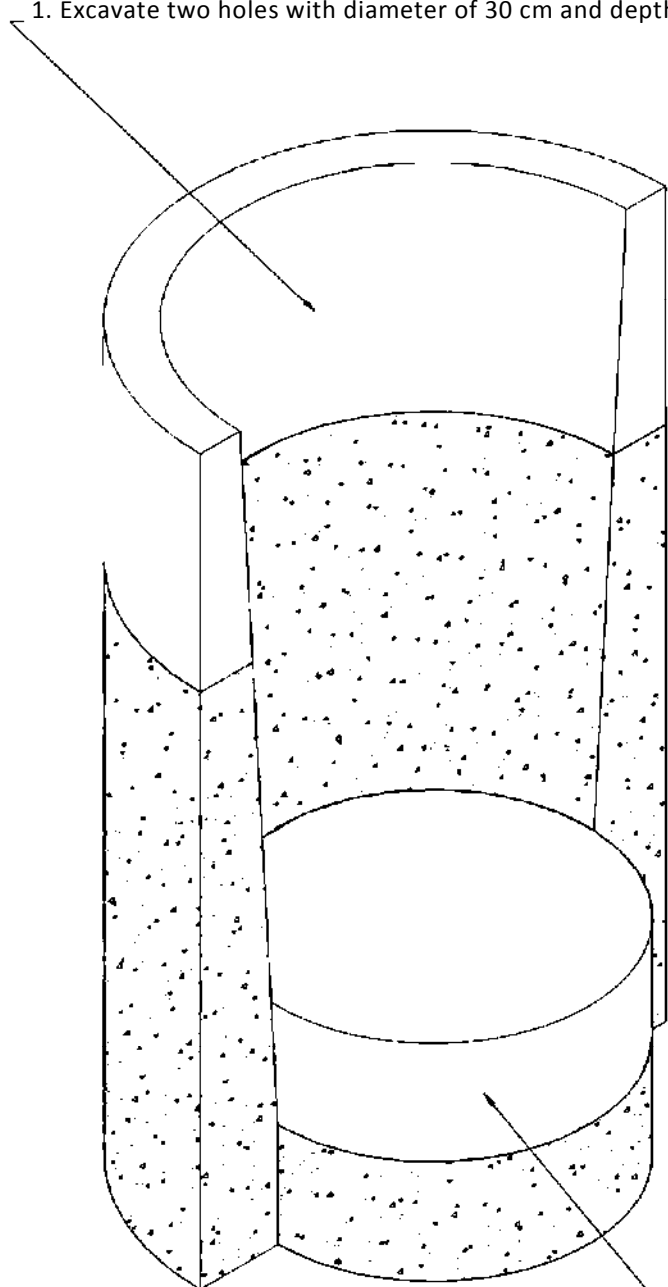
4. Complete concrete casting as per layout.
5. When the concrete has set, fill the excavation hole by compacting the infill material up to the finished ground level.

Le misure del disegno sono espresse in cm		HOLZHOFF	
Tolleranze generali applicate: *Sezione/diametro legname impregnato $\pm 0.5$ (cm) *Lunghezza legname impregnato 19 (lung. totale) *Tolleranze legname impregnato $\pm 0.2$ (cm) *Componenti in metallo $\pm 1$ (mm) *Componenti in altri materiali plastici $\pm 1.5$ (mm)		denominazione e/o cliente:	Istruzioni di montaggio interro montanti
firma esecutore:	Altieri	data:	31.05.05
		nr.	Pag. 3

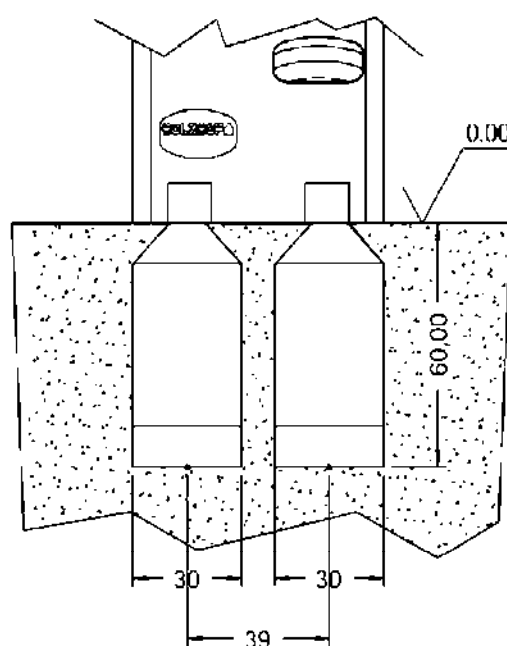
1. Attach the brackets (1) by introducing the following in sequence: PE nut protection cap (2), M8 washer (3), M8x25 HEX screw (4), PE cap (5)



1. Excavate two holes with diameter of 30 cm and depth of 60 cm



NOTA BENE: it is recommended to fix the bolts definitively and only insert the caps once the correct positioning of the elements has been verified.



3. When the concrete has set, position the climbing board brackets in the hole, checking the correct alignment of the lower part of the climbing board with the finished ground level.

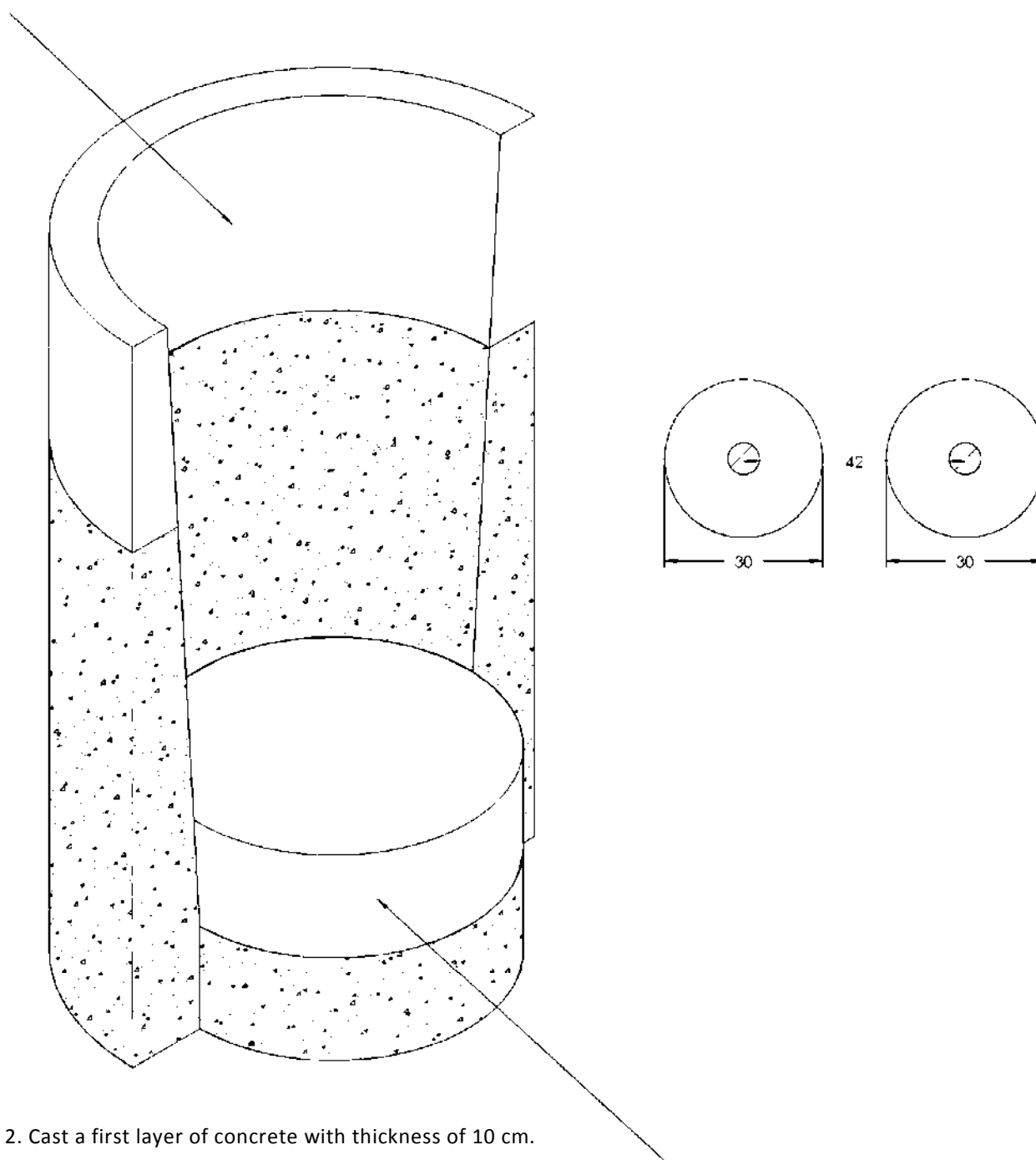
4. Complete concrete casting as per layout.

5. When the concrete has set, fill the hole by compacting the infill material up to the finished ground level.


3. Cast a first layer of concrete with thickness of 10 cm.
- 4.

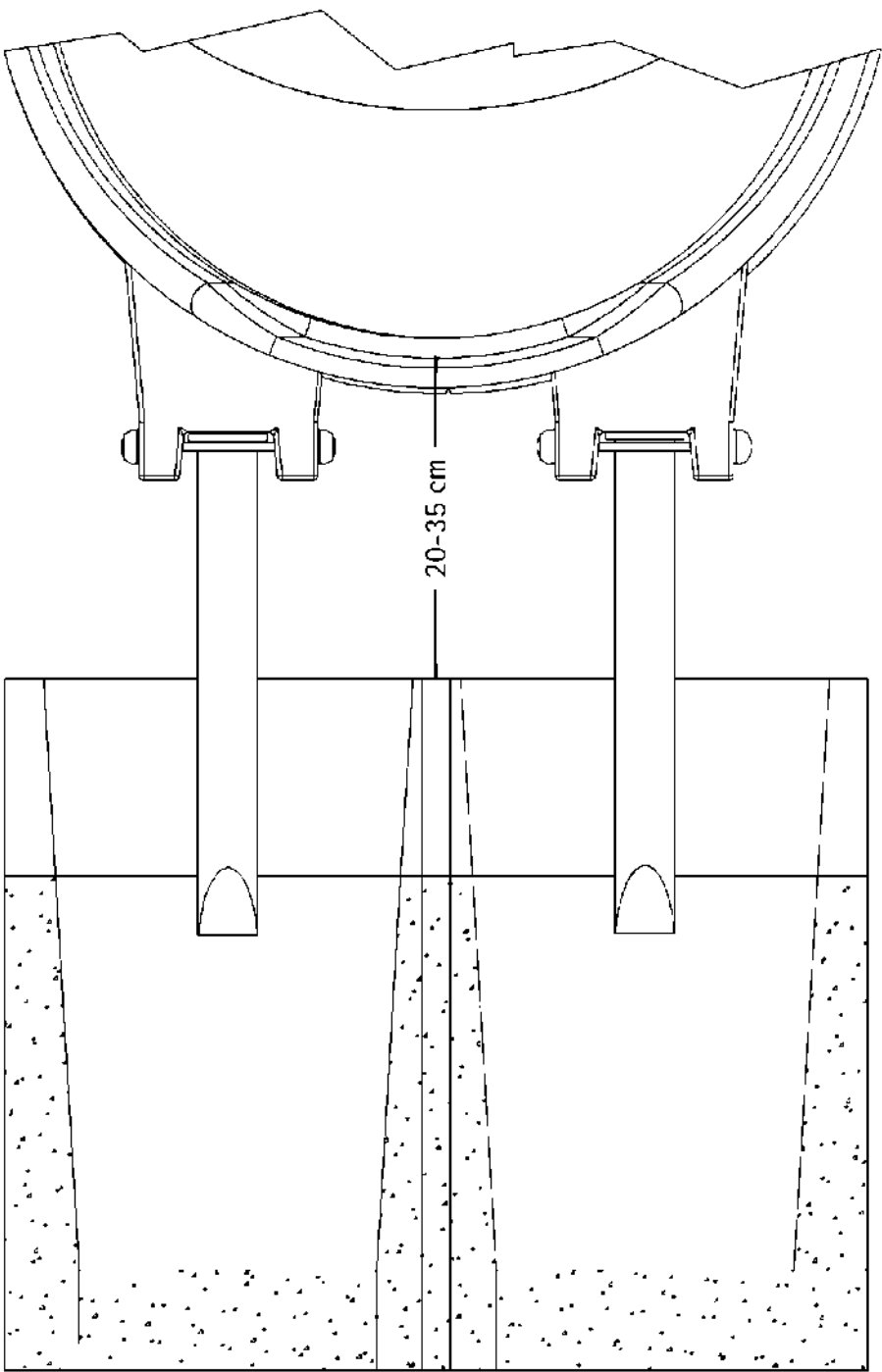
Le misure sono espresse in cm.	SOLZOO	
Colori e modelli rappresentati sono puramente indicativi	denominazione e/o cliente :	istruzioni di montaggio interro pedana di risalita Pe
firma esecutore :	data : 15.02.2011	nr. pag.1

1. Excavate two holes with diameter of 30 cm and depth of 60 cm as per layout.



2. Cast a first layer of concrete with thickness of 10 cm.

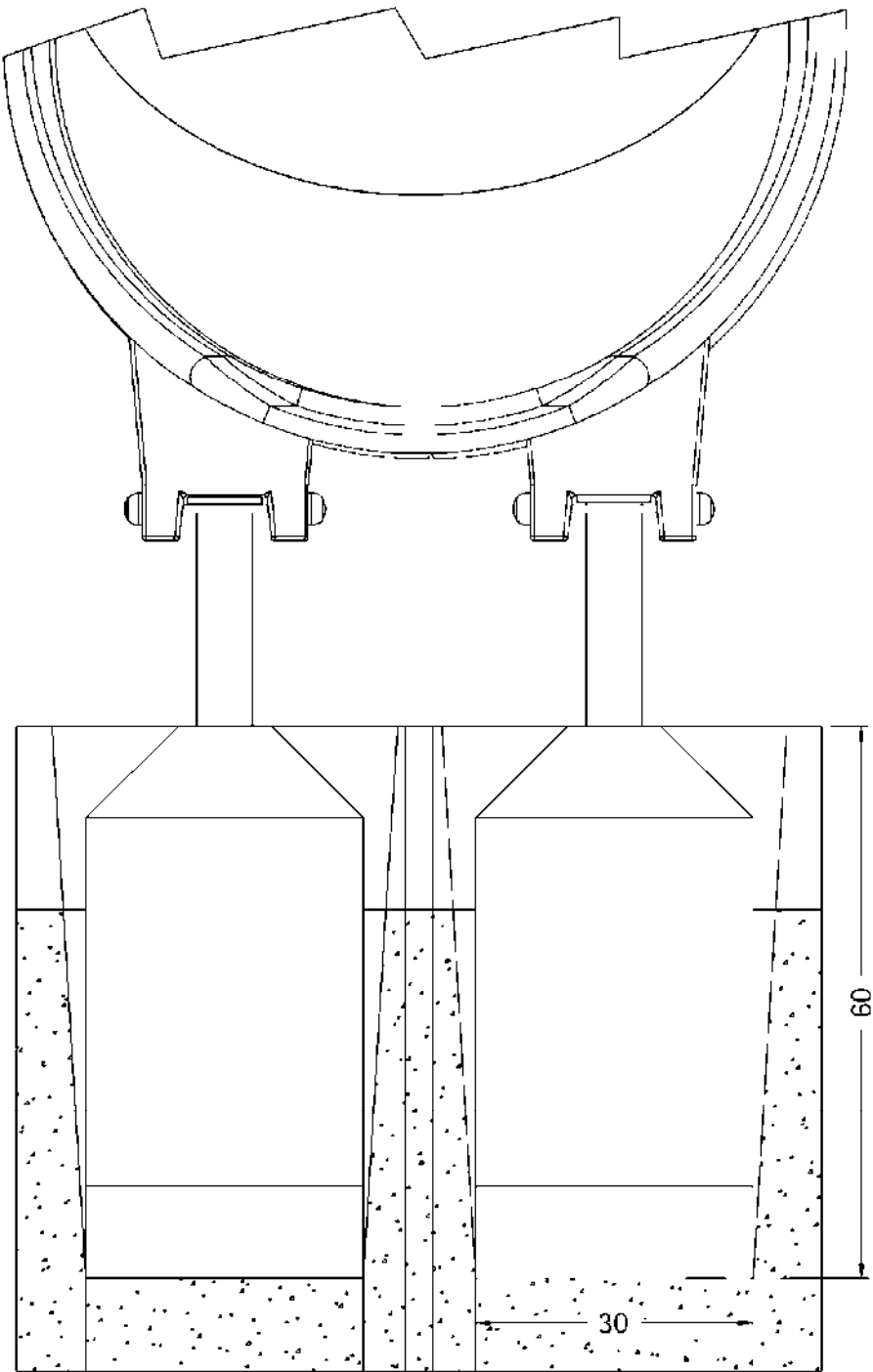
Le misure del disegno sono espresse in cm			
Tolleranze generali applicate: *Sezione/diametro legname impregnato $\pm 0.5$ (cm) *Lunghezza legname impregnato 19% (lung. totale) *Tolleranze legname impregnato $\pm 0.2$ (cm) *Componenti in metallo $\pm 1$ (mm) *Componenti in altri materiali plastici $\pm 1.5$ (mm)	denominazione e/o cliente:	Istruzioni di montaggio interro scivolo tubo Pe	
firma esecutore: <i>Altieri</i>	data: 07.02.07	nr.	Pag. 1



The measurements vary on the basis of the entrance to the slide  
from a minimum of 20 to a maximum of 35 cm.

Le misure del disegno sono espresse in cm.		HOLZHOFF	
Tolleranze generali applicate: *Sezione/diametro legname impregnato ± 0.5 (cm) *Lunghezza legname impregnato 19 (lung. totale) *Lavorazioni legname impregnato + 0.2 (cm) *Componenti in metallo ± 1 (mm) *Componenti in altri materiali plastici ± 1.5 (mm)		denominazione e/o cliente:	Istruzioni di montaggio interro scivolo Tubo Pe
firma esecutore:	Altieri	data:	07.02.07
		nr.	pag.2

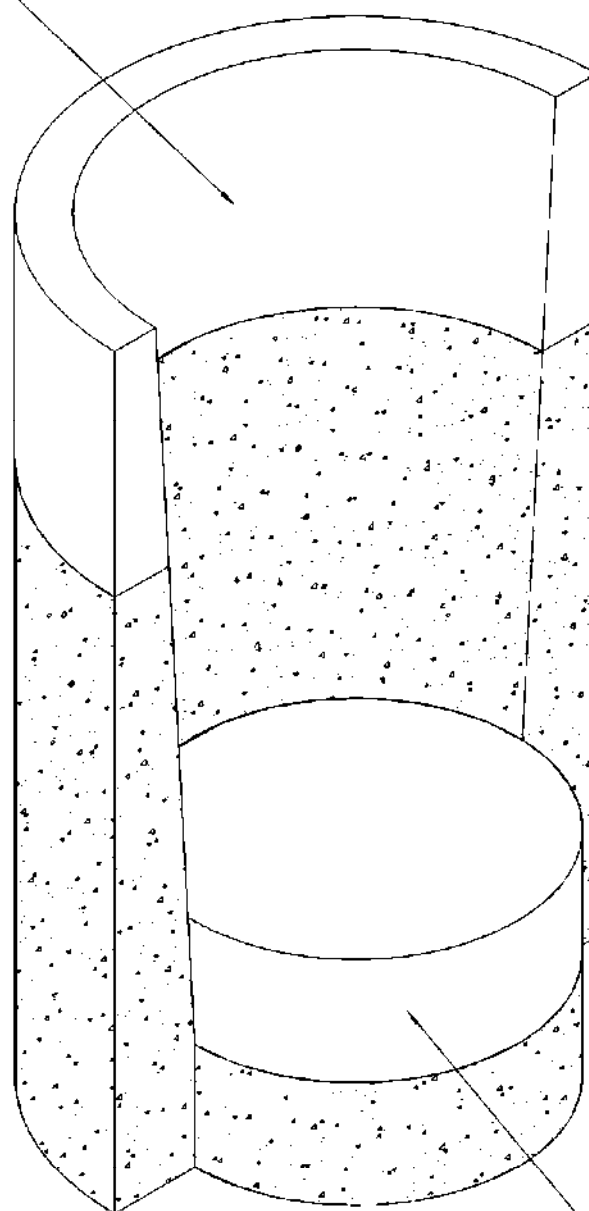
3. Complete concrete casting as per layout.
4. When the concrete has set, fill the hole by compacting the infill material up to the finished ground level.



Le misure del disegno sono espresse in cm.		HOLZHOFF	
Tolleranze generali applicate: *Sezione/diametro legname impregnato $\pm 0.5$ (cm) *Lunghezza legname impregnato $\pm 19$ (lung. totale) *Lavorazioni legname impregnato $\pm 0.2$ (cm) *Componenti in metallo $\pm 1$ (mm) *Componenti in altri materiali plastici $\pm 1.5$ (mm)		denominazione e/o cliente:	istruzioni di montaggio interro scivolo tubo Pe
firma esecutore:	Altieri	data:	07.02.07
		nr.	pag.1



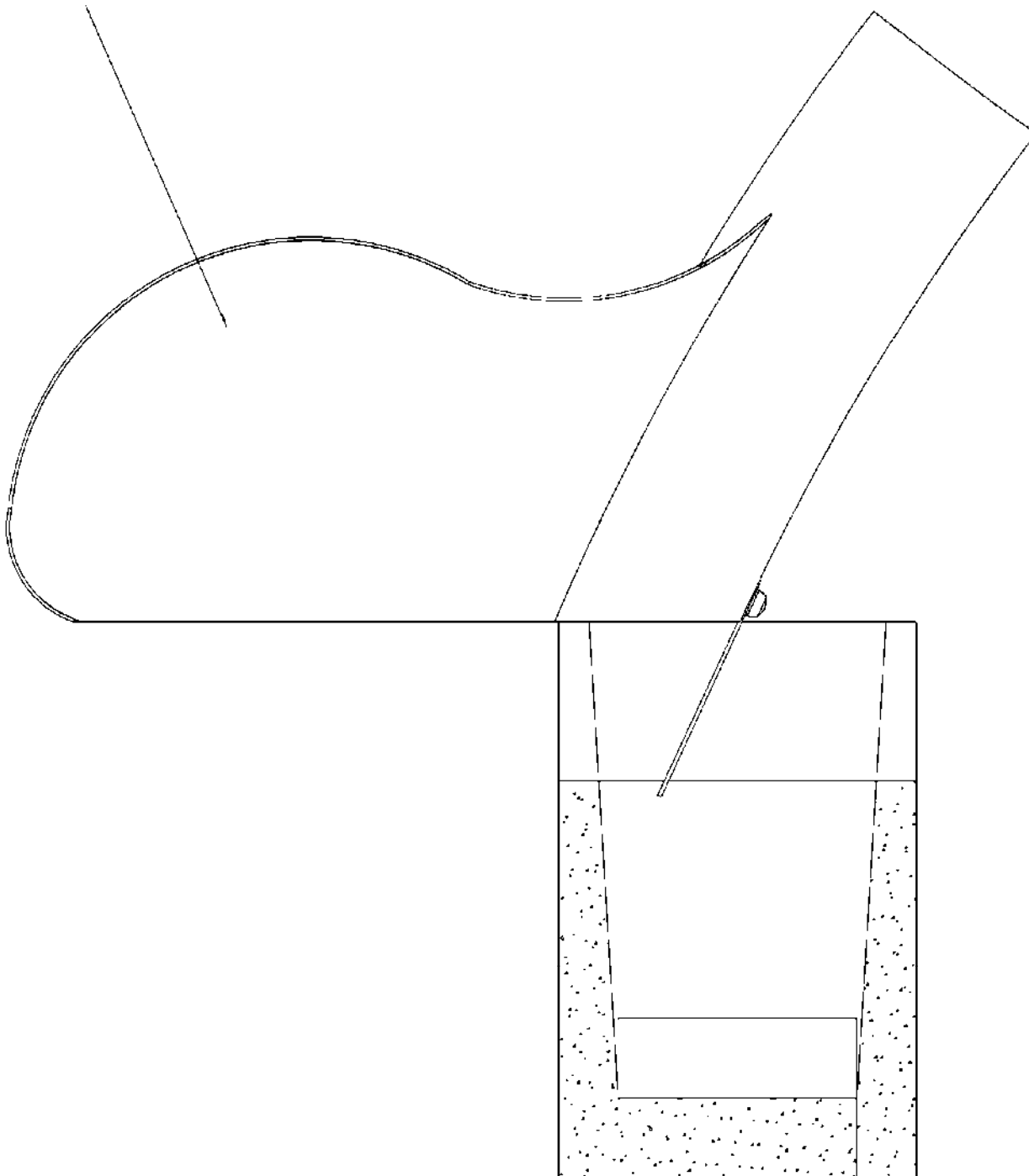
1. Excavate a hole with diameter of 30 cm and depth of 60 cm



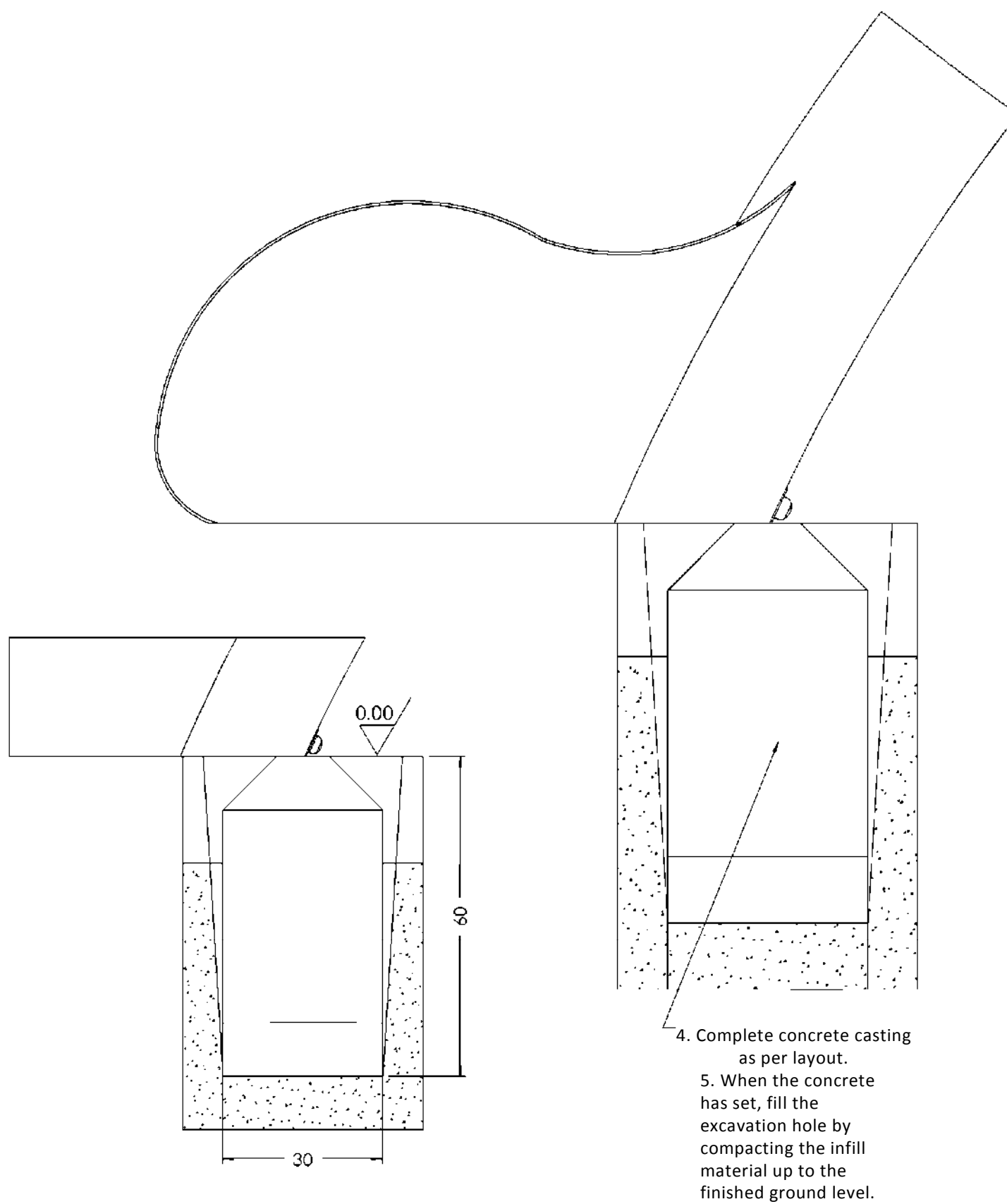
2. Cast a first layer of concrete with thickness of 10 cm.

Le misure del disegno sono espresse in cm		HOLZHOPE	
Tolleranze generali applicate: *Sezione/diametro legname impregnato $\pm 0.5$ (cm) *Lunghezza legname impregnato 19% (lung. totale) *Tolleranze legname impregnato $\pm 0.2$ (cm) *Componenti in metallo $\pm 1$ (mm) *Componenti in altri materiali plastici $\pm 1.5$ (mm)		denominazione e/o cliente:	Istruzioni di montaggio interro scivolo curvo Pe
firma esecutore:	Altieri	data:	31.05.05
		nr.	Pag. 1

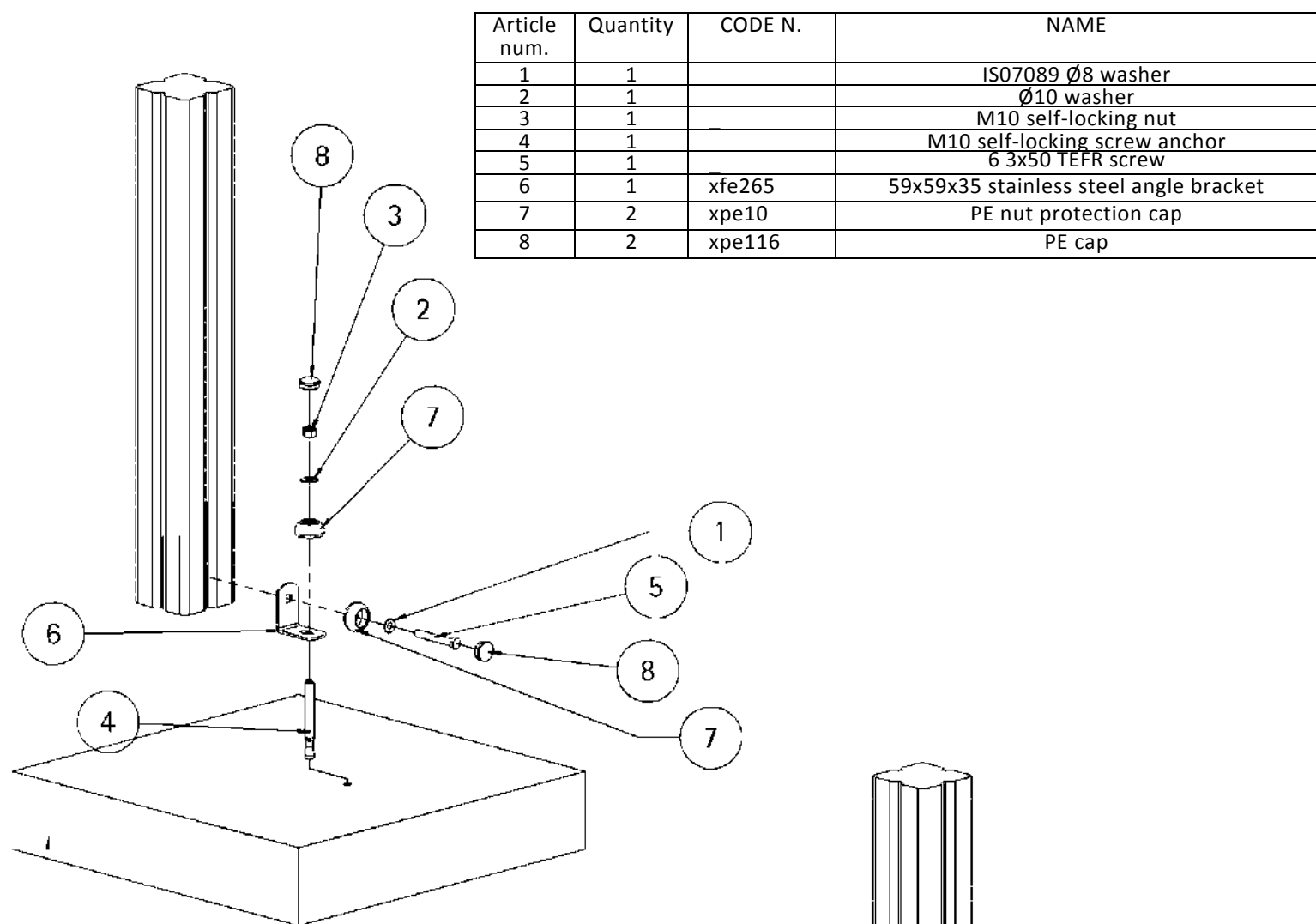
3. When the concrete has set, position the slide bracket in the excavation hole, checking the correct alignment of the lower part of the slide with the finished ground level.



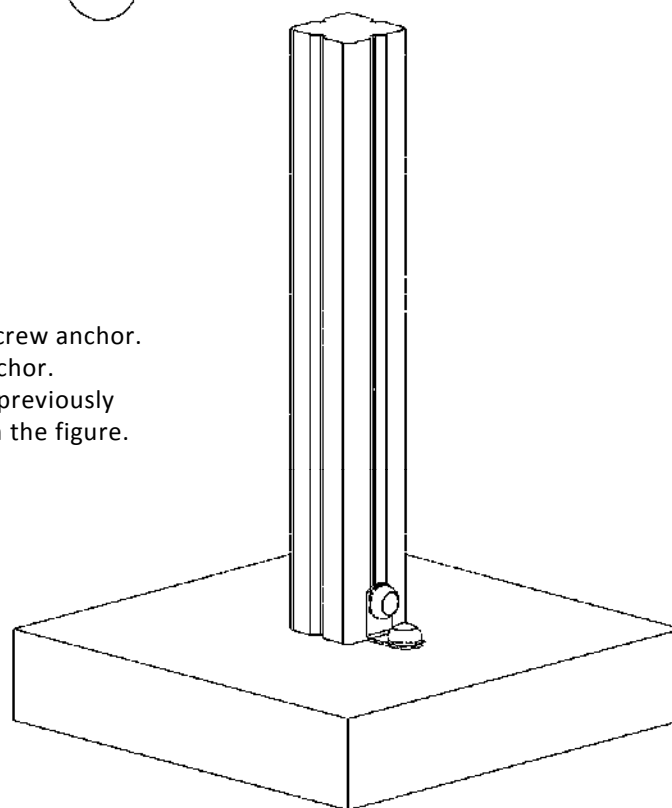
Le misure del disegno sono espresse in cm		HOLZHOFF	
Tolleranze generali applicate: *Sezione/diametro legname impregnato $\pm 0.5$ (cm) *Lunghezza legname impregnato 19 (lung. totale) *Lavorazioni legname impregnato $\pm 0.2$ (cm) *Componenti in metallo $\pm 1$ (mm) *Componenti in altri materiali plastici $\pm 1.5$ (mm)		denominazione e/o cliente:	Istruzioni di montaggio interro scivolo curvo Pe
firma esecutore:	Altieri	data:	31.05.05 nr. Pag. 2



Le misure del disegno sono espresse in		HOLZHOFF	
Tolleranze generali applicate: *Sezione/diametro legno: $\pm 0.5$ (cm) *Lunghezza: legno: $\pm 0.5$ (cm) / $\pm 0.2$ (cm) *Lavorazioni legno: $\pm 0.2$ (cm) *Componenti in metallo: $\pm 1$ (mm) *Componenti in altri materiali plastici: $\pm 1.5$ (mm)		denominazione e/o cliente:	Istruzioni di montaggio interro scivolo curvo Pe
firma esecutore:	Altieri	data:	31.05.05
		nr.	Pag. 3



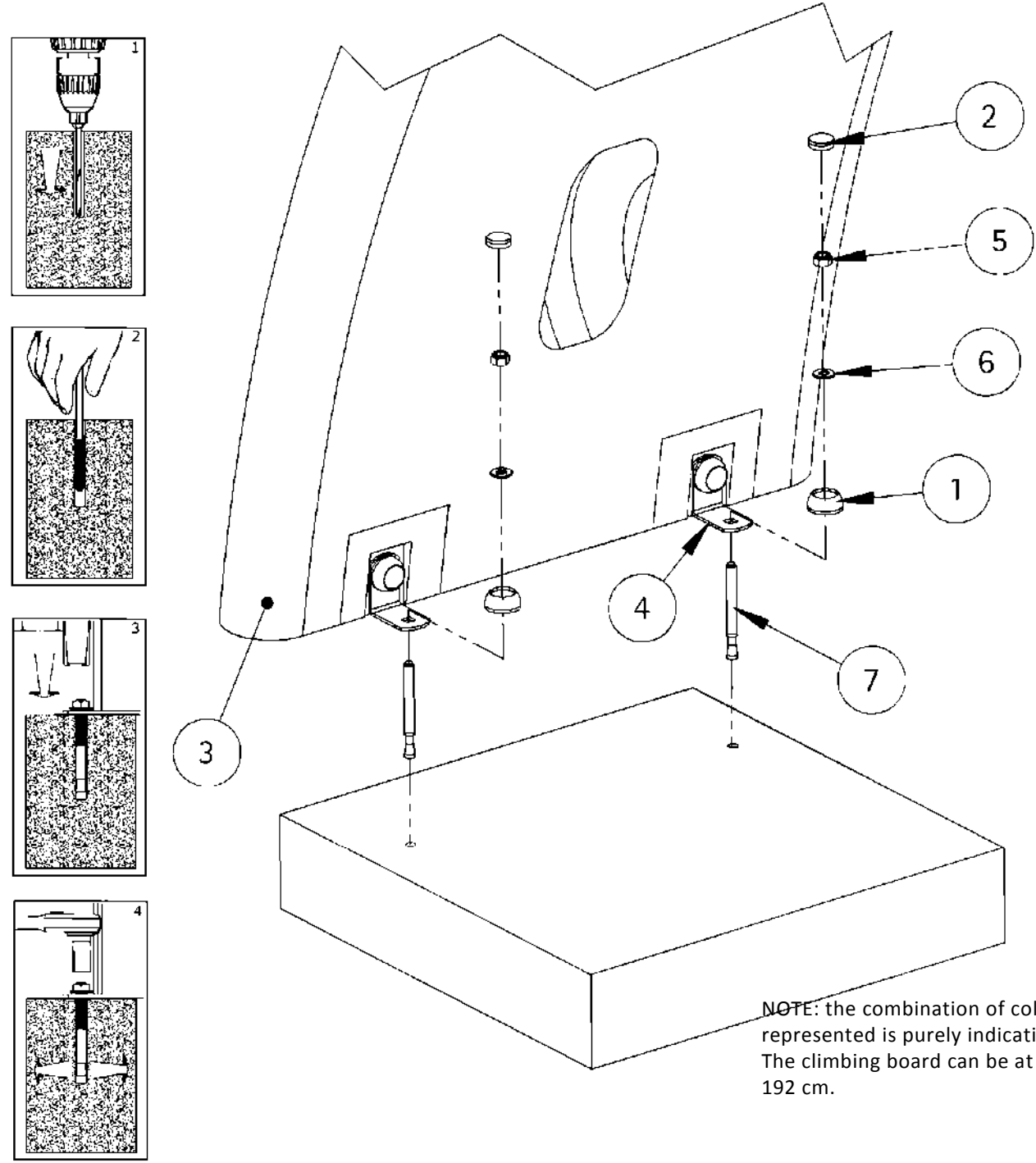
1. Position the strut and the angle bracket on the support surface, marking the position of the screw anchor.
2. Drill the support surface and position the screw anchor.
3. Fix the angle bracket to the support surface (if not previously performed) using the relevant bolts, as indicated in the figure.



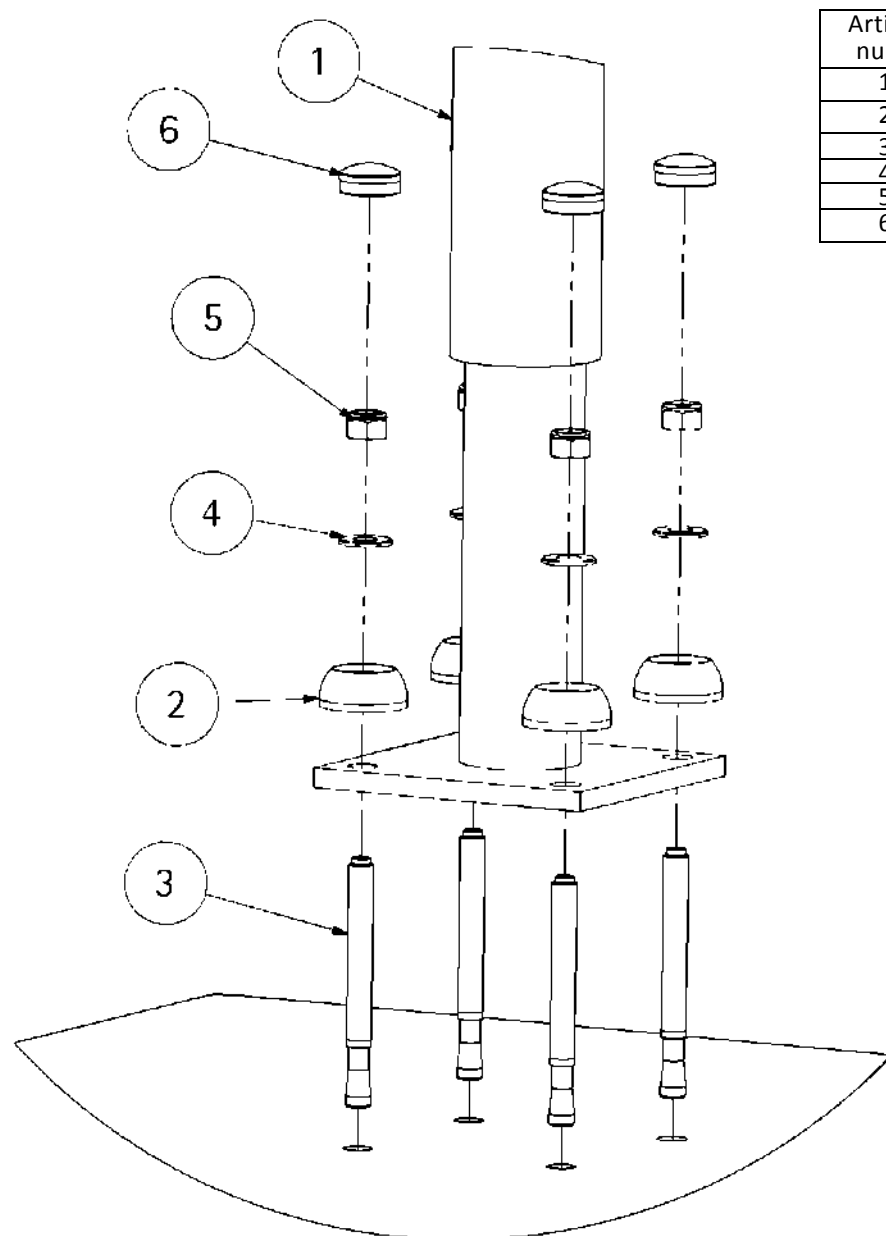
Le misure del disegno sono espresse in cm	HOLZHOFF	
Tolleranze generali applicate: *Sezione/diametro legno: impregnato $\pm 0,5$ (cm) *Lunghezza legno: impregnato $\pm 0,5$ (cm) *Lavorazioni legno: impregnato $\pm 0,2$ (cm) *Componenti in metallo $\pm 1$ (mm) *Componenti in altri materiali plastici $\pm 1,5$ (mm)	denominazione e/o cliente:	istruzioni di montaggio ancoraggio montanti in alluminio
firma esecutore: <i>Altieri</i>	data: 15.10.07	nr. 4209

Article num.	Quantity	CODE N.	NAME
1	2	xpe10	PE nut protection cap
2	2	xpe116	PE cap
3	1	-	PE climbing board
4	2	xfe265	59x59x35 stainless steel angle bracket
5	2		M10 self-locking nut
6	2		Ø10 washer
7	2	-	M8x115 screw anchor

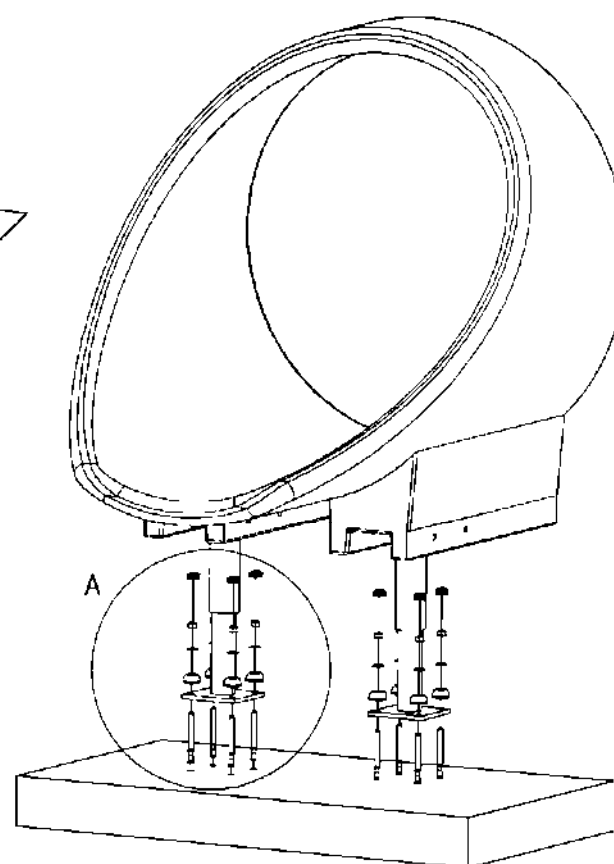
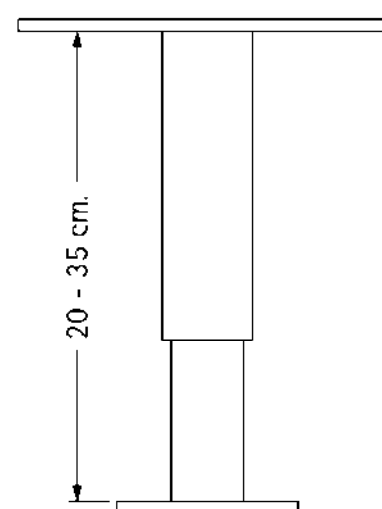
1. Position the climbing board on the support surface and mark the position of the screw anchors.
2. Drill the support surface and position the screw anchors.
3. Fix the angle brackets to the support surface using the relevant bolts, as indicated in the figure.



Le misure del disegno sono espresse in cm		<b>HOLZHOFF</b>	
Tolleranze generali applicate: *Sezione/diametro legname impregnato ± 0,5 (cm) *Lunghezza legname impregnato 19 (lung. totale) *Lavorazioni legname impregnato + 0,2 (cm) *Componenti in metallo ± 1 (mm) *Componenti in altri materiali plastici ± 1,5 (mm)		denominazione e/o cliente:	istruzioni di montaggio ancoraggio pedana di risalita in Pe
firma esecutore:	<i>Altieri</i>	data:	19.06.06 nr. pag. 1



Article num.	Quantity	NAME
1	2	Tube slide anchorage bracket
2	8	PE nut protection cap
3	8	M10 self-locking screw anchor
4	8	Ø10 washer
5	8	M10 self-locking nut
6	8	PE cap

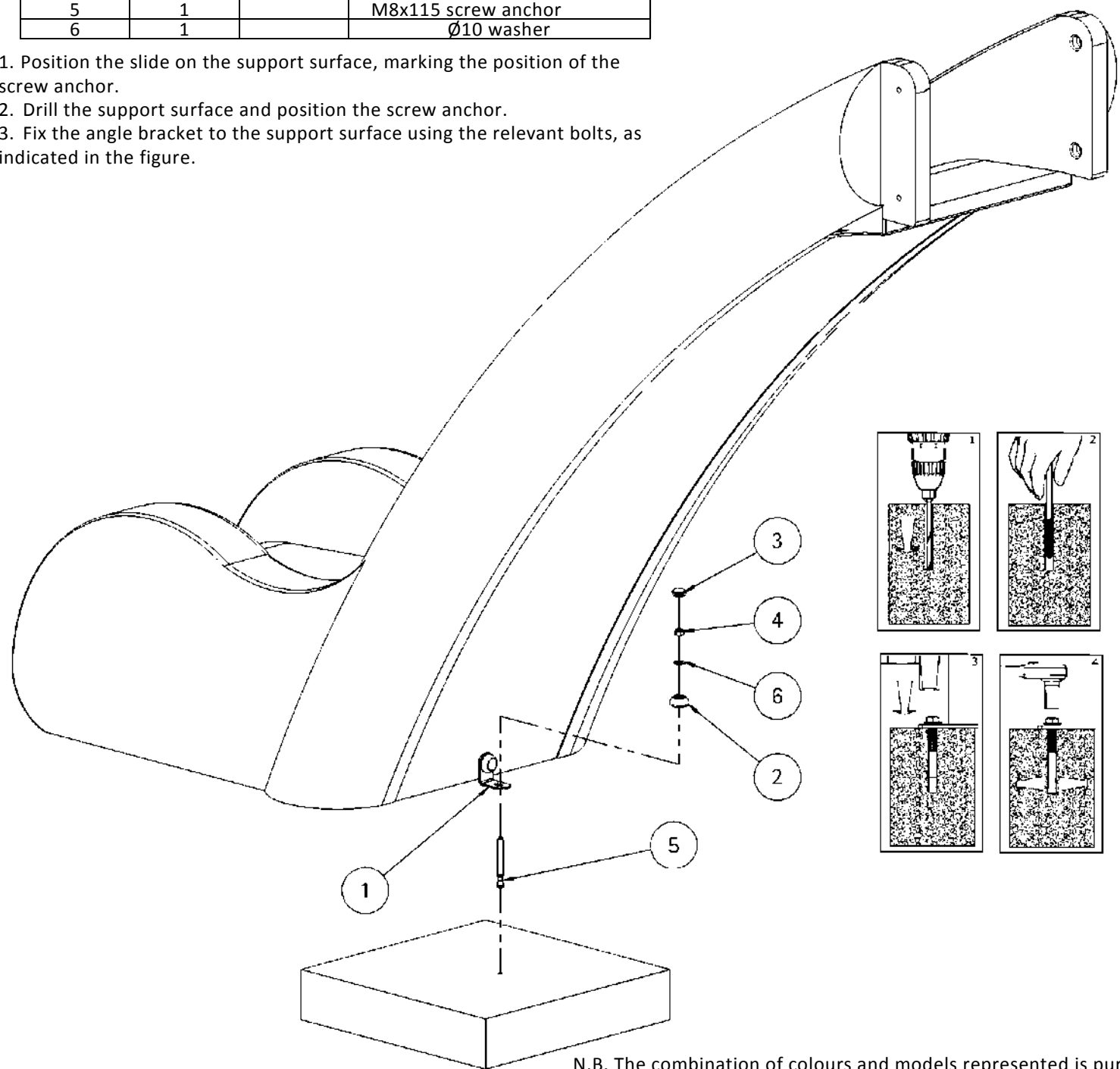


1. Adjust the bracket (1) to the necessary height.
2. Mark the position of the screw anchors on the ground.
3. Drill the support surface and position the screw anchors.
4. Fix the bracket to the support surface using the relevant bolts, as indicated in the figure.


Le misure del disegno sono espresse in cm.		<b>HOLZHOFF</b>	
Tolleranze generali applicate: *Sezione/diametro legname impregnato $\pm 0,5$ (cm) *Lunghezza legname impregnato 19 (lung. totale) *Lavorazioni legname impregnato $\pm 0,2$ (cm) *Componenti in metallo $\pm 1$ (mm) *Componenti in altri materiali plastici $\pm 1,5$ (mm)		denominazione e/o cliente:	istruzioni di montaggio ancoraggio scivolo tubo
firma esecutore:	<i>Altieri</i>	data:	12.02.07
		nr.	pag. 1

Article num.	Quantity	CODE N.	NAME
1	1	xfe265	59x59x35 stainless steel angle
2	2	xpe10	PE nut protection cap
3	2	xpe116	PE cap
4	1		M10 self-locking nut
5	1		M8x115 screw anchor
6	1		Ø10 washer

1. Position the slide on the support surface, marking the position of the screw anchor.
2. Drill the support surface and position the screw anchor.
3. Fix the angle bracket to the support surface using the relevant bolts, as indicated in the figure.



N.B. The combination of colours and models represented is purely indicative.  
The slide can be at a height of 84-144-192 cm.

Le misure del disegno sono espresse in	cm		
Tolleranze generali applicate: *Sezione/diametro legname impregnato $\pm 0.5$ (cm) *Lunghezza legname impregnato (9) (lung. totale) *Lavorazioni legname impregnato $\pm 0.2$ (cm) *Componenti in metallo $\pm 1$ (mm) *Componenti in altri materiali plastici $\pm 1.5$ (mm)		denominazione e/o cliente:	istruzioni di montaggio ancoraggio scivolo curvo pe
firma esecutore:	<i>Altieri</i>	data:	16.02.2011 nr. pag.1